



**PRODUCT CATALOG**





## OUR STORY

Founded in 2003 by a group of audiophiles who understood that good audio products didn't necessarily have to cost an arm and a leg. We started with a small line of outdoor rock speakers that immediately gained attention from consumers who were astounded by the sound quality and reasonable price. We soon expanded our line to include in-wall and ceiling speakers, amplifiers, speaker selectors and more. Eventually we grew to be a market leader for everything home audio, right down to the wire!

Our product line is always expanding for both consumers and installers who appreciate quality products at a great price. We have over 1200 models of speakers, electronics and A/V accessories designed and engineered in the United States and manufactured directly from top-rated ISO 9004 factories. These same factories produce some of world's most famous brand name speakers. OSD Audio found a way to bridge the gap between great sound and affordable pricing, and we are constantly looking for ways to bring even better quality and pricing to customers throughout the world.

Although the company has since grown, we are still a family. OSD Audio is made up of sales, marketing and administrative staff, each with a different job to do but all with the same goal—to ensure that every customer has the best possible experience. Everyone at OSD Audio believes that customers come first. Unlike other companies, we won't hide behind automated voice mail systems and complicated email processes. Our staff is available to answer questions and to provide technical support and personal customer service.

DAVE CHAI - President



## CONTENTS

TRIMLESS 8

STANDARD TRIM 12

MONITOR/SOUNDBAR 18

SUBWOOFER 22

OUTDOOR 28

AMPLIFIERS 42

SPEAKER SELECTORS 52

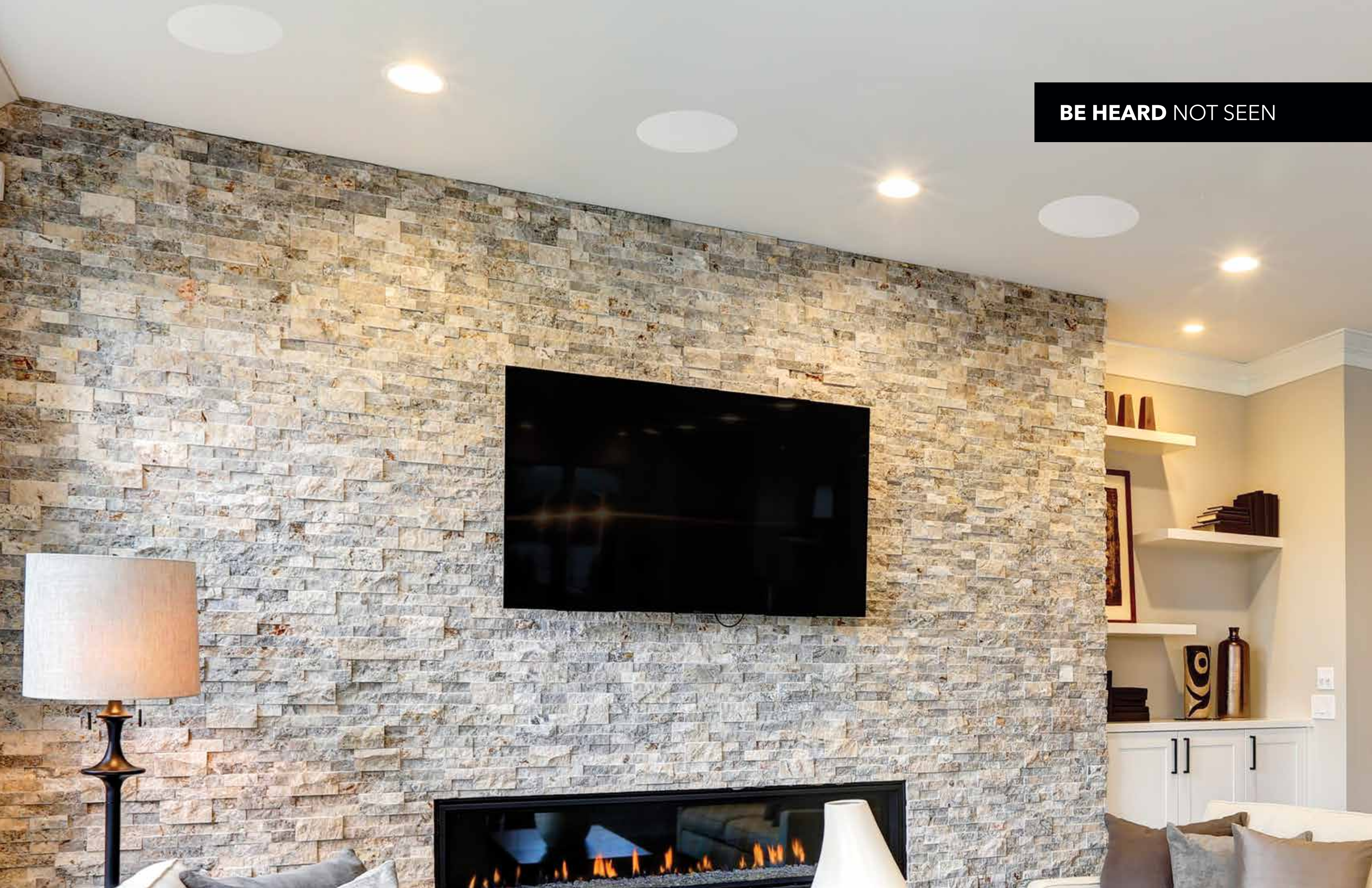
VOLUME CONTROL 54

CABLES & WIRE 60

INSTALL SUPPLIES 66



**BE HEARD** NOT SEEN





# TRIMLESS SPEAKERS



**HEARD BUT NOT SEEN - EXPERIENCE THE DIFFERENCE TRIMLESS MAKES.**  
If you’re looking to add in-ceiling speakers to your living room, home theater, bedroom, kitchen or other area, now is a great time to buy. The audio technology behind in-wall and in-ceiling speakers is better than ever, and you’ll love (and be amazed) at how discreet in-wall and in-ceiling speakers are and how much extra space they add to rooms. What makes these speakers so popular is not only the amazing audio quality, but the fact they are virtually invisible thanks to micro-trim grilles. Once installed, the trimless speakers simply and elegantly integrate into any interior, and paintable grilles create an even more stealthy appearance.

## KEY FEATURES



### Trimless Grille

- Blends seamlessly into any decor.
- Strong magnetic retention system
- Paintable for color matching



### Pivoting Tweeter

- Premium materials for the smoothest response
- Enjoy spine-tingling high notes
- Pivots to accommodate room layout



### Custom X-Over

- 12dB crossover network
- Engineered with premium components
- Directs frequencies with pin-point accuracy



ACE870

Angled LCR Speaker  
Woofer: 8" Carbon Fiber Composite  
Tweeter : 1" Pivoting Titanium Dome  
Butyl Rubber Surround  
Treble Contour Switch  
Power Handling: 175W  
Freq Response: 35Hz - 20kHz  
Sensitivity: 88db  
Impedance: 8 ohms



ACE850

Woofer: 8" Carbon Fiber Composite  
Tweeter: 1" Pivoting Titanium Dome  
Butyl Rubber Surround  
Power Handling: 175W  
Freq Response: 35Hz - 20kHz  
Sensitivity: 88db  
Impedance: 8 ohms



ACE840

Woofer: 8" Glass Fiber  
Tweeter: 1" Pivoting Titanium Dome  
Butyl Rubber Surround  
Power Handling: 100W  
Freq Response: 35Hz - 20kHz  
Sensitivity: 88db  
Impedance: 8 ohms



ACE800

Woofer: 8" Polypropylene  
Tweeter: 1" Pivoting PEI  
Butyl Rubber Surround  
Power Handling: 120W  
Freq Response: 40Hz - 20kHz  
Sensitivity: 87db  
Impedance: 8 ohms



ACE840TT

Woofer: 8" Glass Fiber DVC  
Tweeter: Dual ½" Titanium Coated  
Butyl Rubber Surround  
Power Handling: 120W  
Freq Response: 38Hz - 20kHz  
Sensitivity: 88db  
Impedance: 8 ohms



ACE670

Angled LCR Speaker  
Woofer: 6.5" Carbon Fiber  
Tweeter: 1" Pivoting Aluminum Dome  
Butyl Rubber Surround  
Treble Contour Switch  
Power Handling: 90W  
Freq Response: 45Hz - 20kHz  
Sensitivity: 89db  
Impedance: 8 ohms



ACE650

Woofer: 6.5" Carbon Fiber  
Tweeter: 1" Pivoting Titanium  
Butyl Rubber Surround  
Power Handling: 90W  
Freq Response: 45Hz - 20kHz  
Sensitivity: 89db  
Impedance: 8 ohms



ACE640

Woofer: 6.5" Glass Fiber  
Tweeter: 1" Pivoting Titanium  
Butyl Rubber Surround  
Power Handling: 150W  
Freq Response: 40Hz - 20kHz  
Sensitivity: 89db  
Impedance: 8 ohms



ACE600

Woofer: 6.5" Polypropylene  
Tweeter: ¾" PEI Dome  
Butyl Rubber Surround  
Power Handling: 120W  
Freq Response: 50Hz - 22kHz  
Sensitivity: 88db  
Impedance: 8 ohms



ACE640TT

Woofer: 6.5" Glass Fiber DVC  
Tweeter: Dual ½" Titanium Coated  
Butyl Rubber Surround  
Power Handling: 120W  
Freq Response: 45Hz - 20kHz  
Sensitivity: 89db  
Impedance: 8 ohms



ACE550

Woofer: 5¼" Carbon Fiber  
Tweeter: ½" Pivoting Titanium Dome  
Butyl Rubber Surround  
Power Handling: 100W  
Freq Response: 60Hz - 20kHz  
Sensitivity: 89db  
Impedance: 8 ohms



ACE500

Woofer: 5¼" Polypropylene  
Tweeter: ¾" PEI Dome  
Butyl Rubber Surround  
Power Handling: 75W  
Freq Response: 79Hz - 20kHz  
Sensitivity: 89db  
Impedance: 8 ohms

TRIMLESS CONT.



ACE400

Woofer: 3" Polypropylene  
Power Handling: 60W  
Freq Response: 120Hz - 20kHz  
Sensitivity: 88db  
Impedance: 8 ohms



IW650LCR

Type: 6.5" In-Wall LCR Speaker  
Woofer: Dual 6.5" Kevlar Cones  
Tweeter: 1" Aluminum Dome  
Frequency Response: 40Hz-22kHz  
Power Handling: 200 Watts  
Sensitivity: 89 dB  
Impedance: 8 Ohms  
Gold-Plated Binding Posts  
Paintable Grille Included  
Left, Center, Right Application  
Sold As: Single



IW550LCR

Type: 5.25" In-Wall LCR Speaker  
Woofer: Dual 5.25" Carbon & Glass Fiber Cone  
Tweeter: 1" Ceramic Coated Aluminum  
Frequency Response: 57Hz-20kHz  
Power Handling: 150 Watts  
Sensitivity: 87 dB 1w/1m  
Impedance: 8 Ohms  
Inputs: Spring Binding Posts  
Paintable Grille Included  
Left, Center, Right Application  
Magnetically Shielded  
Sold As: Single



IW525LCR

Type: 5.25" In-Wall LCR Speaker  
Woofer: Dual 5.25" Polypropylene Woofers  
Tweeter: 1" Pivoting Silk Dome  
Frequency Response: 55Hz-20kHz  
Power Handling: 150 Watts  
Sensitivity: 86 dB 1w/1m  
Impedance: 8 Ohms  
Inputs: Spring Binding Posts  
Paintable Grille Included  
Left, Center, Right Application  
Magnetically Shielded  
Sold As: Single



# STANDARD CEILING SPEAKERS



## CLASSIC ARCHITECTURAL DESIGN.

Standard Trim In-Ceiling speakers are a natural for whole-house audio. Multiple sizes provide solutions to almost any application, large or small. These speakers provide excellent power handling capability while producing smooth bass notes, distinctive sound staging and impressive audio resolution. Pivoting tweeters can be aimed toward the listening area of your choice making these a natural part of your home theater system as well.

### KEY FEATURES



#### Classic Grille

- Looks like most of the current fixtures in your home.
- Paintable for color matching



#### Pivoting Tweeter

- Premium materials for the smoothest response
- Enjoy spine-tingling high notes
- Pivots to accommodate room layout



#### Custom X-Over

- 12dB crossover network
- Engineered with premium components
- Directs frequencies with pin-point accuracy



ICE1080HD

Woofer: 10" Injected Composite Paper Cone  
Tweeter: 1" Ferrofluid Cooled Silk Dome  
Midrange: 2.5" Treated Paper Cone  
Frequency Response: 30Hz - 20kHz  
Power Handling: 150W  
Sensitivity: 89 dB  
Impedance: 8 Ohms



ICE870

Angled LCR Speaker  
Woofer: 8" Carbon Fiber Composite  
Tweeter : 1" Pivoting Aluminum Dome  
Treble Contour Switch  
Power Handling: 150W  
Freq Response: 55Hz - 20kHz  
Sensitivity: 89db  
Impedance: 8 ohms



ICE850

Woofer: 8" Carbon Fiber Composite  
Tweeter : 1" Pivoting Titanium Dome  
Butyl Rubber Surround  
Power Handling: 175W  
Freq Response: 35Hz - 20kHz  
Sensitivity: 89db  
Impedance: 8 ohms



ICE840

Woofer: 8" Glass Fiber  
Tweeter : 1" Pivoting Titanium Dome  
Butyl Rubber Surround  
Power Handling: 150W  
Freq Response: 40Hz - 20kHz  
Sensitivity: 89db  
Impedance: 8 ohms



ICE800

Woofer: 8" Polypropylene  
Tweeter: ½" PEI Dome  
Butyl Rubber Surround  
Power Handling: 140W  
Freq Response: 40Hz - 20kHz  
Sensitivity: 87db  
Impedance: 8 ohms



ICE660

Angled LCR Speaker  
Woofer: 6½" Polypropylene  
Tweeter: 1" Pivoting Silk Dome  
Butyl Rubber Surround  
Treble Contour Switch  
Power Handling: 150W  
Freq Response: 50Hz - 20kHz  
Sensitivity: 92db  
Impedance: 8 ohms



ICE630

Angled LCR Speaker  
Woofer: 6½" Polypropylene  
Tweeter: ½" Pivoting PEI Dome  
Power Handling: 125W  
Freq Response: 52Hz - 20kHz  
Sensitivity: 89db  
Impedance: 8 ohms



ICE640

Woofer: 8" Glass Fiber  
Tweeter : 1" Pivoting Titanium Dome  
Butyl Rubber Surround  
Power Handling: 150W  
Freq Response: 40Hz - 20kHz  
Sensitivity: 89db  
Impedance: 8 ohms



ICE610

Woofer: 6½" Polypropylene  
Tweeter: ½" PEI Dome  
Butyl Rubber Surround  
Power Handling: 120W  
Freq Response: 50Hz - 20kHz  
Sensitivity: 88db  
Impedance: 8 ohms



ICE520

Woofer: 5¼" Polypropylene  
Tweeter: ½" PEI Dome  
Butyl Rubber Surround  
Power Handling: 100W  
Freq Response: 65Hz - 22kHz  
Sensitivity: 88db  
Impedance: 8 ohms



# WEATHER RESISTANT



## MUSIC ANYWHERE YOU WANT IT.

For rooms prone to humidity such as bathrooms, laundry rooms and hot tubs, moisture can cause speaker parts to rust and even stop working after only a few months. OSD Audio's WRS Series of In-Ceiling Speakers is specifically designed for these areas so you can relax in the tub and enjoy beautiful sound. These moisture-resistant speakers have powder-coated grilles and specially treated internal components that withstand humidity and can even be used outside in covered porches. The WRS Series includes polypropylene woofers with santoprene surround and moisture-resistant tweeters for excellent high and low notes.

## KEY FEATURES



### Moisture Resistant

- Specifically for high humidity areas
- Treated to withstand moisture
- Powder coated grilles and sealed internal components



### Performance

- Polypropylene woofer with Santoprene surround
- Moisture resistant tweeters
- High power handling capability



### Multi-Application

- Ideal for saunas, bathrooms and laundry rooms
- Enjoy music i high humidity areas
- Perfect for covered porches and patios



ICE840WRS

Woofer: 8" Glass Fiber  
Tweeter: 1" Pivoting Titanium Dome  
Santoprene Surround  
Rust Resistant Aluminum Grilles  
Power Handling: 150W  
Freq Response: 38Hz - 20kHz  
Sensitivity: 90db  
Impedance: 8 ohms



ICE800WRS

Woofer: 8" Polypropylene Cone  
Tweeter: 1"Pivoting Polycarbonate  
Santoprene Surround  
Rust Resistant Aluminum Grilles  
Power Handling: 150W  
Freq Response: 38Hz - 21kHz  
Sensitivity: 90db  
Impedance: 8 ohms



ICE800TTWRS

Woofer: 6.5" Polypropylene  
Tweeter: Dual 1" Polycarbonate  
Santoprene Surround  
Rust Resistant Aluminum Grilles  
Power Handling: 150W  
Freq Response: 38Hz - 21kHz  
Sensitivity: 89db  
Impedance: 8 ohms



ICE640WRS

Woofer: 6.5" Glass Fiber  
Tweeter: 1" Pivoting Titanium Dome  
Santoprene Surround  
Rust Resistant Aluminum Grilles  
Power Handling: 150W  
Freq Response: 40Hz - 20kHz  
Sensitivity: 90db  
Impedance: 8 ohms



ICE600WRS

Woofer: 6.5" Polypropylene Cone  
Tweeter: 1"Pivoting Polycarbonate  
Santoprene Surround  
Rust Resistant Aluminum Grilles  
Power Handling: 150W  
Freq Response: 48Hz - 20kHz  
Sensitivity: 90db  
Impedance: 8 ohms



ICE600TTWRS

Woofer: 6.5" Polypropylene  
Tweeter: Dual 1" Polycarbonate  
Santoprene Surround  
Rust Resistant Aluminum Grilles  
Power Handling: 120W  
Freq Response: 48Hz - 20kHz  
Sensitivity: 89db  
Impedance: 8 ohms



70V COMMERCIAL



COMMERCIAL SOUND ELEVATED.

From restaurants to offices, from theme parks to hotels, OSD Audio has commercial speakers for just about any application. Our high-end 70v in-ceiling models are very popular for commercial applications that require premium sound quality & top notch aesthetics. These speakers have a built-in 70v transformer with multiple tap settings & are available in both 6.5" & 8" versions. For a more traditional commercial design, check out our rugged C1070V & C1090VK speakers that come fully equipped with 6.5 & 5.25" drivers with 6 oz. magnets and dual 70/25V transformers.

KEY FEATURES



High Performance

- ST Series delivers premium sound quality with built-in 70v switch taps, and home audio styling
- C Series provides dependable audio component in a traditional commercial speaker chassis with integrated 70v transformer



Easy Installation

- Easy access connectors
- Dog-ear mounting system for easy installation



70V Transformer

- Built-In 70v transformer for easy connecting
- 70v tap offers multiple wattage settings as well as 8ohm option
- Both switch tap and line transformer on select models



ICE800ST

8" Polypropylene Woofer  
Dual 3/4" Pivoting Silk Tweeters  
Butyl Rubber Surround  
Dual Voice Coil / Single Stereo  
Power Handling: 175W  
Freq Response: 36Hz - 22kHz  
Sensitivity: 89db  
Impedance: 16 / 8 ohms



ICE620ST

6.5" Mica-Filled Poly Woofer  
1" Pivoting Silk Tweeter  
Butyl Rubber Surround  
Power Handling: 150W  
Freq Response: 38Hz - 22kHz  
Sensitivity: 91db  
Impedance: 8 ohms



ACE600ST

6.5" Mica-Filled Poly Woofer  
1" Pivoting Silk Tweeter  
Butyl Rubber Surround  
Power Handling: 150W  
Freq Response: 38Hz - 22kHz  
Sensitivity: 91db  
Impedance: 8 ohms



C1090VK

6.5" Polypropylene Woofer  
Dual 3/4" Pivoting Silk Tweeters  
Butyl Rubber Surround  
Dual Voice Coil / Single Stereo  
Power Handling: 175W  
Freq Response: 40Hz - 22kHz  
Sensitivity: 89db  
Impedance: 16 / 8 ohms



C1070V

5.25" Polypropylene Woofer  
3/4" Pivoting Silk Tweeter  
Butyl Rubber Surround  
Power Handling: 120W  
Freq Response: 65Hz - 20kHz  
Sensitivity: 91db  
Impedance: 8 ohms



PC640 BLACK

6.5" Polypropylene Woofer  
1" Silk Tweeter  
140 Degree Sound Dispersion  
Integrated 70v Tap  
Power Handling: 100W  
Sensitivity: 92db  
Impedance: 8 ohms



PC640 WHITE

6.5" Polypropylene Woofer  
1" Silk Tweeter  
140 Degree Sound Dispersion  
Integrated 70v Tap  
Power Handling: 100W  
Sensitivity: 92db  
Impedance: 8 ohms



SP70T-100

Heavy Duty 70V Transformer 100W  
freq response: 20Hz-20kHz  
Primary taps: 20, 15, 10, 5W  
Secondary impedance: 8, 4 ohms  
Insertion Loss: 1dB  
6" leads  
Double side adhesive tape for easy mounting



SP70T

70V Transformer 25W  
20Hz-20kHz ± 1dB frequency response  
Primary taps: 20, 15, 10, 5W  
Secondary impedance: 8, 4 ohms  
Insertion Loss: 1dB  
6" leads  
Double side adhesive tape for easy mounting



EW70V

External Burial in-line Transformer  
Weatherproof Design  
Convert 8ohm speaker into 70v  
Input to Output Cable Seals  
8ohm to 2.5, 5, 10, 15, 20W taps  
"No Tool" taps selection  
ABS impact resistant enclosure

# MONITOR / SOUNDBAR



5.25" Hi-Fi Monitor Speakers  
Woofer: 5.25" Paper Cone Woofer  
Tweeter: 1" Silk Dome  
Power Handling: 100W Peak  
Frequency Response: 90Hz - 20kHz  
Sensitivity: 87db  
Impedance: 4 ohms

NERO STUDIO5

## AWARD WINNING SOUND

These speakers include a 5.25" woofer cone which is typically larger than most bookshelf speakers with 3" or 4" cones, so the sound has an astonishingly full tonal range and is particularly powerful on bass. The 1' silk dome tweeter produces clear highs that are non-fatiguing to the ears, the enclosure is solidly built so these speakers may be a slightly heavier than other monitor speakers; however, you'll notice the difference in sound quality. The Nero Studio5 also includes a vinyl wrap that simulates wood so they will look elegant in any room decor. Paired with an amp or receiver, these bookshelf speakers are an ideal complement for den or bedroom audio systems or pair it with your old school vinyl system for a truly remarkable audio experience.

## KEY FEATURES



### Performance

- 5.25" Woofer provides accurate and true sound reproduction
- 100W peak power handling



### Hi Highs

- 1" Silk Dome Tweeter for smooth accurate highs
- Large tweeter baffle for smooth accurate highs



### Sound & Style

- Custom tuned ported enclosure
- Black wood grain finish and sleek mesh grille look great in any room



Speaker Type: 42" 2 Channel Sound Bar with Wireless Bluetooth Subwoofer W/ Remote Control  
Channels: 2.1  
Sound Processing: Dolby' Digital AC3  
Frequency Response: 30Hz - 20kHz  
Power Handling: 160 Watts  
Power Distribution: 15 Watts x 2 + 55 Watts  
Includes Aux, USB and Toslink Inputs for Mobile Devices and A/V Source Equipment

NERO SB42



## SUBWOOFERS



IN-WALL ON-WALL



SPACE SAVING BASS

In-wall subwoofers are an increasingly popular choice for home theaters and whole house audio because they don't take up floor space and fade easily into architectural designs. A good in-wall subwoofer can provide the same rich bass and life-like sound of free-standing speakers, so you don't have to compromise sound quality for aesthetics.

KEY FEATURES



High Performance

- Dual woofers for increased SPL
- High Power Handling
- Butyl Rubber Surround



Blends In

- Paintable Frame & Grille
- Trimless design on select models
- Takes up zero floor space



Easy Installation

- Dog-ear or stud bay mounting system for easy installation
- Shallow Mounting Depth
- Compatible with any type of loudspeaker amp or A/V receiver



IWS10

Speaker Type: 10" In-Wall Subwoofer  
Woofers: 10" Polypropylene with Rubber Surround  
Freq Response: 38Hz - 200Hz  
Power Handling: 200 Watts  
Sensitivity: 2.83V/1m: 86 dB  
Impedance: 8 Ohms  
Inputs: Spring Binding Posts  
Mounting Bracket for Easy Installation Included  
Paintable Grille & Frame Included  
Integrated Rear Dust Shield



IWS8

Speaker Type: 8" In-Wall Subwoofer  
Woofers: 8" Polypropylene  
Freq Response: 40Hz - 200Hz  
Power Handling: 150 Watts  
Sensitivity: 2.83V/1m: 87 dB  
Impedance: 8 Ohms  
Inputs: Spring Binding Posts  
Dog Ear Installation Brackets  
Cut-Out Template for Easy Installation  
Paintable Grille & Frame Included  
Integrated Rear Dust Shield



IWS88

Speaker Type: Dual 8" In-Wall Subwoofer  
Woofers: Dual 8" Injected Polypropylene w/ Reinforced Back Plate  
Freq Response: 38Hz-500Hz  
Power Handling: 350 Watts  
Sensitivity: 90 dB @ 1W/1M  
Impedance: 4 Ohms  
Inputs: Spring Binding Posts  
Dog Ear Installation Brackets  
Cut-Out Template for Easy Installation  
Paintable Grille Included



NERO FS800

Speaker Type: 8" Trimless In-Wall Subwoofer  
Woofers: 8" Polypropylene with Rubber Surround  
Freq Response: 60Hz - 500Hz  
Power Handling: 200 Watts  
Impedance: 8 Ohms  
Inputs: Gold-Plated Binding Posts  
Sealed Tuned Enclosure  
Paintable Grille Included



SL800D

Speaker Type: 8" In-Wall Subwoofer  
Woofers: 8" Polypropylene  
Passive Radiator: 10"  
Frequency Response: 40Hz - 500Hz  
Power Handling: 300 Watts  
Impedance: 8 Ohms  
Inputs: Spring Binding Posts  
Cut-Out Template for Easy Installation  
Paintable Grille & Frame Included  
Tuned Sealed Cabinet



# POWERED SUBS



## SOUND YOU CAN FEEL

If you want to make a great sound system sound even greater, add a subwoofer speaker to the mix. These specialized speakers produce only the lowest audible frequencies that traditional speakers are not designed to do, so you'll hear and even feel thunderous, rich bass in movies, gaming, and music soundtracks. There are many types of subwoofers for sale and placement options to suit just about any size room or budget, and today's subwoofers are capable of impressive power output in much smaller footprints than their behemoth predecessors.

## KEY FEATURES



### Power

- Dual woofers for increased SPL
- High Power Digital Amp
- Butyl Rubber Surround



### Performance

- Variable Crossover
- Phase Control
- Low Frequency Response



### Design

- Tuned enclosures
- Small Footprint Compact Design
- Freestanding, Under Sofa, Wall Mount



PS12

Speaker Type: 12" Free-Standing Front Firing Subwoofer  
Woofers: 12" Polypropylene Cone with Rubber Surround  
Frequency Response: 25 Hz to 120Hz (-3dB ref.0dB)  
Power Handling: 300 Watts  
Sensitivity: Variable, 350mV to 2.8V for Rated Power at 8 Ohms  
Impedance: 8 Ohms  
Phase: 0-180°  
Inputs: L&R / Low Level



PS10

Speaker Type: 10" Free-Standing Front Firing Subwoofer  
Woofers: 10" Polypropylene Cone with Rubber Surround  
Frequency Response: 25Hz to 120Hz (-3dB ref.0dB)  
Power Handling: 200 Watts  
Sensitivity: Variable, 350mV to 2.8V for Rated Power at 8 Ohms  
Impedance: 8 Ohms  
Phase: 0-180°  
Inputs: L&R / Low Level



SS8

Speaker Type: 8" Single Drive Ultra Thin Powered Subwoofer  
Woofers: 8" Injected Cone  
Frequency Response: 30Hz-150Hz  
Power Handling: 200 Watts  
Impedance: 8 Ohms  
Inputs: RCA Line Level and Speaker Line Level  
Tuning: Front Firing Port  
Phase: 0-180°  
Level Control: Variable  
Variable Low-pass Filter 40Hz - 150Hz @ 18dB/Octave  
Optional Wall Mount Bracket SS-8-Bracket Available



NERO DUAL X8

Speaker Type: 8" Free-Standing Front Firing Subwoofer  
Active Woofers: 8" Polypropylene  
Passive Woofers: 8"  
Frequency Response: 20Hz to 160Hz (-3dB ref.0dB)  
Power Handling: 300 Watts  
Impedance: 8 Ohms  
Phase: 0-180°  
Inputs: L&R Low Level  
Voltage: 100-120V AC / 220-240V AC



NERO TUBE BASS 10

Speaker Type: 10" Down-Firing Powered Subwoofer  
Woofers: 10" Polypropylene  
Frequency Response: 30Hz - 120 Hz  
Power Handling: 400 Watts  
Impedance: 8 Ohms  
Phase: 0-180°  
Inputs: L&R / Low Level  
Voltage: 100-120V AC / 220-240V AC



NERO WSA

Wireless Subwoofer Accessory  
5.8 GHz operating frequency  
Upgraded chip set for reliability  
Up to 150 ft operation distance between transmitter and receiver (line of sight).  
Audio Output Level: 2V  
Frequency Response: 18Hz-22KHz  
Audio Distortion: <1%  
Signal to Noise Ratio: >80dB



NERO WRSKII

Type: Wireless Amplifier Speaker & Subwoofer Kit  
Peak Power Output: 25 Watts per channel  
Audio Output Level: Subwoofer Out: 2V Speaker Out: 25W (load at 4ohm)  
Frequency Response: Subwoofer: 20Hz - 200Hz  
Speaker: 20Hz - 20kHz  
2.4GHz Digital Wireless Link for Crystal Clear Audio  
Signal to Noise Ratio: >80dB  
Audio Distortion: <1%  
Up to 100 FT operation distance between transmitter & receiver (line of sight)  
What's included: transmitter, receiver, 9V AC adapter, 15V AC adapter, strands (2), 6 FT speaker wire, & user guide



## OUTDOOR SPEAKERS





PATIO SPEAKERS



AP850

Type: 8" 2-Way Indoor/ Outdoor Patio  
Woofer: 8" Poly Cone with Rubber Surround  
Tweeter: 1" Ferrofluid Cooled Silk Dome  
Frequency Response: 33Hz - 22kHz  
Power handling: 180W  
Sensitivity: 90 dB  
Impedance: 8 Ohms  
Inputs: Gold-Plated Spring-Loaded Binding Posts  
Weather Resistant: All-Weather Versatility  
Powder-coated Rust-resistant Steel Grille  
Silicone-sealed Internal Cabinetry and Driver  
Colors Available: Black or White



AP840

Type: 8" 2-Way Indoor/ Outdoor Patio  
Woofer: 8" Polypropylene  
Tweeter: 1" Supernil Soft Dome  
Frequency Response: 30Hz to 22kHz  
Power handling: 200W  
Sensitivity: 90 dB  
Impedance: 8 Ohms  
Inputs: Gold-Plated Binding Posts  
Weather Resistant: All-Weather Versatility  
Powder-coated Rust-resistant Aluminum Grille  
Sturdy ABS Polymer Frame  
Colors Available: Black or White



AP670

Type: 6.5" 2-Way Indoor/ Outdoor Patio  
Woofer: 6.5" Waterproof Paper Cone  
Tweeter: 1" Silk Dome  
Frequency Response: 44Hz to 22kHz  
Power handling: 120W  
Sensitivity: 90 dB  
Impedance: 8 Ohms  
Inputs: Gold-Plated Binding Posts  
Weather Resistant: All-Weather Versatility  
Powder-coated Rust-resistant Aluminum Grille  
Low Resonance Composite Cabinetry  
Colors Available: Black or White



AP450

Type: 4" 3-Way Indoor/ Outdoor Patio  
Woofer: 4" Polypropylene  
Tweeter: 0.5" PEI dome  
Frequency Response: 59Hz to 22kHz  
Power Handling: 110W  
Sensitivity: 90 dB  
Impedance: 8 Ohms  
Inputs: Gold-Plated Binding Posts  
Weather Resistant: All-Weather Versatility  
Powder-coated Rust-resistant Aluminum Grille  
Colors Available: Black or White



AP650 70V

Type: 6.5" Indoor/ Outdoor Patio, 70V Optional  
Woofer: 6.5" Polypropylene  
Tweeter: 1" Silk Dome  
Frequency Response: 37Hz to 22kHz  
Power handling: 150W  
Sensitivity: 91 dB  
Impedance: 8 Ohms w/ Optional 70V Transformer  
70V Selectable Taps  
Inputs: Gold-Plated Binding Posts  
Weather Resistant: All-Weather Versatility; IPX6 Rated  
Silicone-sealed Internal Cabinetry and Driver  
Powder-coated Rust-resistant Steel Grille  
Colors Available: Black or White



AP640T

Type: 6.5" Indoor/ Outdoor Patio, 70V Optional  
Woofer: 6.5" Polypropylene  
Tweeter: 1" Supernil Soft dome  
Frequency Response: 39Hz to 20kHz  
Power handling: 150W  
Sensitivity: 89dB  
Impedance: 8 Ohms w/ Optional 70V  
70V Selectable Taps  
Inputs: Gold-Plated Binding Posts  
Weather Resistant: All-weather Versatility  
Powder-coated Rust-resistant Aluminum Grille  
Sturdy ABS Polymer Frame  
Colors Available: Black or White



AP525 70V

Type: 5.25" Indoor/ Outdoor Patio, 70V Optional  
Woofer: 5.25" Polypropylene  
Tweeter: 1" Silk Dome  
Frequency Response: 45Hz to 20kHz  
Power handling: 75W  
Sensitivity: 90 dB  
Impedance: 8 Ohm w/ Optional 70V Transformer  
70V Selectable Taps  
Inputs: Gold-Plated Binding Posts  
Weather Resistant: All-Weather Versatility  
Powder-coated Rust-resistant Steel Grille  
Sturdy Fiberglass Reinforced Plastic Frame  
Colors Available: Black or White



AP520T

Type: 5.25" Indoor/ Outdoor Patio, 70V Optional  
Woofer: 5.25" Polypropylene  
Tweeter: 1" Supernil Soft Dome  
Frequency Response: 45Hz to 22kHz  
Power handling: 120W  
Sensitivity: 88 dB  
Impedance: 8 Ohms w/ Optional 70V  
70V Selectable Taps  
Inputs: Gold-Plated Binding Posts  
Weather Resistant: All-Weather Versatility  
Powder-coated Rust-resistant Aluminum Grille  
and Composite Cabinet  
Colors Available: Black or White



FORZA 6

Speaker Type: 6.5" Weather-Resistant Hanging  
Pendant Speaker (70V/8 Ohm)  
Woofer: 6.5" Poly Cone with Rubber Surround  
Tweeter: 1" Silk Dome  
Frequency Response: 100Hz-20kHz  
Max Power: 80 Watts  
Sensitivity: 85 dB  
Impedance: 8 Ohms/ 70V  
Dispersion Angle: 120'  
30W Transformer (70V/ 100V)  
Taps: 40 Watts, 20 Watts, 10 Watts, 5 Watts  
IP66 Rated, Dust Proof and Water Resistant  
Powder-coated Rust-resistant Grille  
Optional Landscape Mount Kit



FORZA 5

Speaker Type: 5.25" Weather Resistant Hanging  
Pendant Speaker (70V/8 Ohm)  
Woofer: 5.25" Poly Cone with Rubber Surround  
Tweeter: 1" Silk Dome  
Frequency Response: 110Hz-20kHz  
Max Power: 60 Watts  
Sensitivity: 84 dB  
Impedance: 8 Ohms/ 70V  
Dispersion Angle: 120'  
Taps: 30 Watts, 15 Watts, 7.5 Watts, 3.75 Watts  
IP66 Rated, Dust Proof and Water Resistant  
Powder-coated Rust-resistant Grille  
Optional Landscape Mount Kit

TAKE IT OUTSIDE

Today's outdoor speakers are more versatile than ever and offer many ways to bring your favorite tunes to the backyard, pool, or patio. Designed for the difficult acoustics that exterior spaces present, the best outdoor speakers include reinforced, weatherproof enclosures that withstand inclement weather and include components that compensate for the fact that outdoor environments don't have walls and ceilings to reflect sound waves. Choosing the right outdoor speakers depends on the size and layout of your space. Large backyards can benefit from outdoor speakers with 8" woofers and 200W of power handling, while a pair of 5.25" 100W rock speakers may be just the right fit for smaller yards. Weather-proof surface-mount patio speakers provide great sound quality, and when mounted under eaves, can last for years.

KEY FEATURES



Durable

- Durable UV resistant enclosures, sealed internal components, powder coated grilles and brackets
- 8", 6.5", 5.25" All-Weather speaker models adapt to any application



70V Options

- Four commercial 70v models available
- Integrated 70v transformers with multiple tap settings
- Indoor/Outdoor design is ideal for a wide variety of commercial applications



Performance

- Tuned enclosures
- High performance components for outstanding sound quality
- Wide dispersion gives greater sound coverage outdoors

BLUETOOTH PATIO



STREAM IT

Wireless speakers have come a long way, thanks to Bluetooth® and Wi-Fi technology, and outdoor speakers are no exception. Wireless outdoor speakers can be installed without the hassle of running speaker wire underground or through walls and eaves, and there are plenty of options including rock, planter, patio and garden speakers that blend effortlessly into any landscape or pool area. While outdoor Bluetooth® and Wi-Fi speakers are technically wireless, they still require power and must be plugged into a standard AC outlet. Pair these speakers with your phone, tablet or wireless-enabled receiver and you'll bask in outdoor audio whenever and wherever you want.

KEY FEATURES



Bluetooth

- Connect and stream music from any bluetooth enabled device
- Indoor/Outdoor design is ideal for a wide variety of applications



IP67 Power

- IP67 rated water proof power supply
- Integrated power amplifier in the master speaker



Performance

- Tuned enclosures
- High performance components for outstanding sound quality
- Wide dispersion gives greater sound coverage outdoors



BTP650

Type: 2-way Bluetooth® Patio Speakers  
Woofer: 6.5" Polypropylene Cone with Butyl Rubber Surround  
Tweeter: 1" Soft Dome Tweeter  
Frequency Response: 35Hz-20kHz  
Power Handling: 100W  
Impedance: 8 Ohms  
Bluetooth® Range: Up to 100 ft w/ Unobstructed Line of Sight; 50 ft to 75 ft When Obstructed  
Bluetooth® Version: 3.0  
Compatible with A2DP Standard  
Powder-coated Rust-resistant Steel Grille  
Composite Resin Low Resonator Cabinet  
Included: IP67 Waterproof Power Adapter, Speaker Wire, and Waterproof Wire Connectors  
Sold As: Pair  
Colors Available: Black or White



BTP525

Type: 2-way Bluetooth® Patio Speakers  
Woofer: 5.25" Treated Paper Cone with Butyl Rubber Surround  
Tweeter: 1" Silk Tweeter  
Frequency Response: 38Hz-20kHz  
Power Handling: 75W  
Impedance: 8 Ohms  
Bluetooth® Range: Up to 100 ft w/ Unobstructed Line of Sight; 50 ft to 75 ft When Obstructed  
Bluetooth® Version: 3.0  
Compatible with A2DP Standard  
Powder-coated Rust-resistant Steel Grille  
Composite Resin Low Resonator Cabinet  
Included: IP67 Waterproof Power Adapter, Speaker Wire, and Waterproof Wire Connectors  
Sold As: Pair  
Colors: Black or White



ROCK SPEAKERS



INTEGRATED OUTDOOR SOUND

OSD Audio rock speakers stand up to the toughest weather conditions and will continue to provide high fidelity sound under severe weather. These realistic looking rock speakers blend into your outdoor space discreetly within any surrounding and deliver excellent sound. Rock speakers are one of the most popular audio “formations,” and range in size and price depending on how big the space you need to fill. Small backyards or patios can use rocks with 5.25” woofers, medium size yards are well suited for 6.5”. Larger yards or pool areas benefit from 8” behemoths with ground shaking power. We’ve designed each of our rock speakers to withstand all kinds of weather conditions, including rain, snow and sun. Even in severe weather, these outdoor rock speakers continue to produce high-fidelity sound that will feel like your own outdoor concert.

KEY FEATURES



Durable

- Durable UV resistant enclosures, sealed internal components, powder coated grilles and brackets
- 8”, 6.5”, 5.25” All-Weather speaker models adapt to any application



Realistic

- Natural looking realistic rock cabinets
- Multiple color options to compliment any landscape
- Decorative design



Performance

- Tuned enclosures
- High performance components for outstanding sound quality
- Wide dispersion gives greater sound coverage outdoors



RS850

Type: 8” 2-way Weather Resistant Rock Speaker  
Woofer: 8” Polypropylene Cone, Sealed Voice Coil & Silicone Encased Leads  
Tweeter: 1” Soft Dome, Silicone Encased Leads, Coaxial Mounted  
Frequency Response: 28Hz to 20kHz  
Power handling: 200W  
Sensitivity: 88 dB +/- 3 dB  
Impedance: 8 Ohms  
Weather Resistant: All-Weather Versatility  
Aerospace Grade, Multi-layer Composite Cabinetry  
Built-in Water Drainage Hole  
Sold As: Single  
Colors: Sandstone Canyon Brown or Granite Grey



RX805

Type: 8” 2-Way Weather Resistant Rock Speakers  
Woofer: 8” Poly Cone, Sealed Voice Coil  
Tweeter: 1” Coaxial Polyamide Dome  
Frequency Response: 35Hz - 20kHz  
Power handling: 200W  
Sensitivity: 91 dB  
Impedance: 8 Ohms  
Weather Resistant: All-Weather Versatility  
Aerospace Grade, Multi-layer Composite Cabinetry  
Sold As: Pair  
Colors: Sandstone Canyon Brown or Granite Grey



RS670

Type: 6.5” 2-way Weather Resistant Rock Speakers  
Woofer: 6.5” Polypropylene Cone. Sealed Voice Coil & Silicone Encased Leads  
Tweeter: 1” Polyamide, Silicone Encased Leads, Coaxial Mounted  
Frequency Response: 35Hz to 20kHz  
Power handling: 150W  
Sensitivity: 90 dB  
Impedance: 8 Ohms  
Weather Resistant: All-Weather Versatility  
Aerospace Grade, Multi-layer Composite Cabinetry  
Sold As: Pair  
Colors: Sandstone Canyon Brown, Slate Dark Grey or Granite Light Grey



RX640

Type: 6.5” 2-Way Weather Resistant Rock Speakers  
Woofer: 6.5” Polypropylene Cone, Sealed Voice Coil  
Tweeter: 1” Coaxial Polyamide  
Frequency Response: 39Hz - 22kHz  
Power handling: 150W  
Sensitivity: 91 dB  
Impedance: 8 Ohms  
Weather Resistant: All-Weather Versatility  
Aerospace Grade, Multi-layer Composite Cabinetry  
Sold As: Pair  
Colors Available: Sandstone Canyon Brown, Granite Grey



RX550

Type: 5.25” 2-Way Weather Resistant Rock Speakers  
Woofer: 5.25” Dual Polypropylene Cone with Butyl Rubber Surround  
Frequency Response: 65Hz to 20kHz  
Power handling: 100W  
Sensitivity: 88 dB  
Impedance: 8 Ohms  
Weather Resistant: All-Weather Versatility  
Aerospace Grade, Multi-layer Composite Cabinetry  
Sold As: Pair  
Colors Available: Sandstone Canyon Brown, Slate Dark Grey, or Granite Light Grey

BLUETOOTH ROCKS



BTR805

Type: 2-Way Bluetooth® Rock Speakers  
Woofer: 8” Polypropylene Cone with Butyl Rubber Surround  
Tweeter: 1” Soft Dome  
Frequency Response: 35Hz-22kHz  
Power Handling: 150W  
Impedance: 8 Ohms  
Bluetooth® Range: Up to 100 ft w/ Unobstructed Line of Sight; 50 ft to 75 ft When Obstructed  
Bluetooth® Version: 4.2  
Compatible with A2DP Standard  
Rigid Exterior Cases with Water-resistant Features  
Included: IP67 Waterproof Power Adapter, Speaker Wire, and Waterproof Wire Connectors  
Sold As: Pair  
Colors Available: Sandstone Canyon Brown or Granite Grey

BACKYARD STREAMING

Get ready to jam in any outdoor space with the BTR Series Bluetooth rock speakers. These speakers are ideal for your lawn, garden, patio or pool area. These speakers have durable composite cabinetry and come with a waterproof IP67 grade power supply for the best in outdoor durability. Powerful and ready for anything you can play, these speakers connect to your favorite Bluetooth-enabled device.

KEY FEATURES



Bluetooth

- Connect and stream music from any bluetooth enabled device
- Indoor/Outdoor design is ideal for a wide variety of applications



IP67 Power

- IP67 rated water proof power supply
- Integrated power amplifier in the master speaker



Performance

- Tuned enclosures
- High performance components for outstanding sound quality
- Wide dispersion gives greater sound coverage outdoors



BTR150

Type: 2-way Bluetooth® Rock Speakers  
Woofer: 5.25” Polypropylene Cone with Butyl Rubber Surround  
Tweeter: 2” Dual Cone  
Frequency Response: 38Hz-20kHz  
Power Handling: 120W  
Impedance: 8 Ohms  
Bluetooth® Range: Up to 75 ft w/ Unobstructed Line of Sight; 40 ft to 50 ft When Obstructed  
Bluetooth® Version: 3.0  
Compatible with A2DP standard  
Rigid Exterior Cases with Water-resistant Features  
Included: IP67 Waterproof Power Adapter, Speaker Wire, and Waterproof Wire Connectors  
Sold As: Pair  
Colors Available: Sandstone Canyon Brown or Slate



LANDSCAPE SPEAKERS



FORZA 6

Speaker Type: Weather-Resistant Landscape/  
Pendant Speaker (70V/8 Ohm)  
Woofer: 6.5" Poly Cone with Rubber Surround  
Tweeter: 1" Silk Dome  
Frequency Response: 100Hz-20kHz  
Max Power: 80 Watts  
Sensitivity: 85 dB  
Impedance: 8 Ohms/ 70V  
Dispersion Angle: 120'  
Taps: 40 Watts, 20 Watts, 10 Watts, 5 Watts  
IP66 Rated, Dust Proof and Water Resistant  
Powder-coated Rust-resistant Grille  
Shown With Optional Landscape Mount Kit



FORZA 5

Speaker Type: Weather Resistant Landscape/  
Pendant Speaker (70V/8 Ohm)  
Woofer: 5.25" Poly Cone with Rubber Surround  
Tweeter: 1" Silk Dome  
Frequency Response: 110Hz-20kHz  
Max Power: 60 Watts  
Sensitivity: 84 dB  
Impedance: 8 Ohms/ 70V  
Dispersion Angle: 120'  
Taps: 30 Watts, 15 Watts, 7.5 Watts, 3.75 Watts  
IP66 Rated, Dust Proof and Water Resistant  
Powder-coated Rust-resistant Grille  
Shown With Optional Landscape Mount Kit



LS2

Type: 2.5" Outdoor Landscape Speakers  
Woofer: 2.5" Sealed PE Cone  
Frequency Response: 200Hz - 20kHz  
Power Handling: 30W  
Sensitivity: 88db  
Impedance: 8 Ohms  
Weather Resistant: Sealed Enclosures, Waterproof  
Integrated Drive-baffle Assembly  
Sold As: Pair  
Color: Brown



FORZA 850

Type: Outdoor In-Ground Omni Speaker  
Woofer: 8" with 360° Horizontal Dispersion  
Tweeter: 1" Mylar Whizzer Cone  
Frequency Response: 42Hz - 20kHz  
Power Handling: 200W  
Sensitivity: 88 dB  
Impedance: 8 Ohms  
Weather Resistant: All-Weather Versatility  
UV-resistant, ABS Impact-resistant Enclosure  
Silicone Sealed Internal Cabinetry & Driver  
Sold As: Single  
Color: Antique Bronze



OS850 70V

Type: 2-Way Outdoor Omni Speaker, 70V Optional  
Woofer: 8" with 360° Horizontal Dispersion  
Tweeter: 1.5" Mylar Whizzer Cone  
Frequency Response: 38Hz - 20kHz  
Power Handling: 300W  
Sensitivity: 90.5 dB 1W/1m  
Impedance: 8 Ohms or Optional 70V  
Weather Resistant: All-Weather Versatility  
Optional 70V Transformer for Commercial Application  
5, 10, 15, 20 and 25W  
Made with Reinforced Resin Fiberglass  
Sold As: Single



OS800

Type: 2-way Outdoor Omni Speaker  
Woofer: 8" Polypropylene Cone  
Tweeter: 1" Mylar Whizzer Cone  
Frequency Response: 42Hz - 20kHz  
Power Handling: 200W  
Sensitivity: 88 dB  
Impedance: 8 Ohms  
Weather Resistant: All-Weather Versatility  
Teflon Sealed Internal Cabinetry & Driver  
Optional External Switchable 70v System  
Sold As: Single  
Color: Green



Design

- Disguised as lawn fixtures and ground lighting
- Durable UV resistant enclosures, sealed internal components,
- All-Weather models adapt to any application



70V Options

- Commercial 70v models available
- Integrated 70v transformers with multiple tap settings
- Outdoor design is ideal for a wide variety of commercial applications



Sound

- Tuned enclosures
- High performance components for outstanding sound quality
- Wide dispersion gives greater sound coverage outdoors



PS520

Type: 2-Way Omni Planter Speakers  
Woofer: 5.25" Poly Cone with Rubber Surround  
Tweeter: .62" Polycarbonate Cone  
Frequency Response: 60Hz to 20kHz +/- 3dB  
Power Handling: 100W  
Sensitivity: 89 dB  
Impedance: 8 Ohms  
Weather Resistant: All-Weather Versatility  
Multi-layer Composite Cabinetry  
Full 360 Degree Sound  
Real Planter with Built-in Water Drainage  
Sold As: Pair  
Color: Terra Cotta



FS525

Type: 2-Way Frog Speakers  
Woofer: 5.25" Injection Molded Poly Cone with Rubber Surround  
Tweeter: .5" Coaxial Polyamide Dome  
Frequency Response: 60Hz -20kHz  
Power Handling: 100W  
Sensitivity: 88 dB  
Impedance: 8 Ohms  
Weather Resistant: All-Weather Versatility  
Sold As: Pair  
Color: Green Patina-like Finish

# LANDSCAPE SUBWOOFERS



## EARTH MOVERS

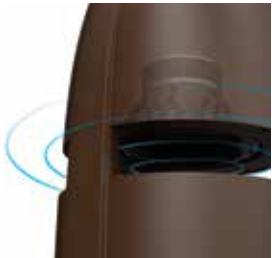
Many people who design their own outdoor audio systems think that adding a subwoofer to the mix is unnecessary. Outdoor audio is simply background music so why add bass? However, adding an outdoor subwoofer can be one of the most important components you bring to your outdoor audio system and here's why. Most outdoor speakers are not designed to cover lower frequencies so adding a subwoofer to a backyard audio system can make a huge difference in the quality of sound you experience. Adding an outdoor subwoofer not only delivers missing bass notes but also takes the low-frequency burden off the other speakers which will optimize your entire audio experience. Our Outdoor Subwoofers are all extremely tough and durable, featuring thick, water- and UV-resistant enclosures so they can stand up to the harshest weather conditions.

## KEY FEATURES



### Durable

- Durable UV resistant enclosures, sealed internal components,
- Blends naturally into any outdoor environment



### Omni

- 360 degree sound dispersion
- Endless placement options



### Performance

- Tuned enclosures
- High performance components for outstanding sound quality
- Wide dispersion gives greater sound coverage outdoors



GLS8

Type: 8" Burial Rated In-Ground Outdoor Subwoofer  
Woofer: 8" Polypropylene Cone with Rubber Surround  
Frequency Response: 28Hz-200Hz  
Power Handling: 500 Watts  
Sensitivity: 84 dB  
Impedance: 8 Ohms  
360° Omni-directional  
Weatherproof Impact Resistant Cabinetry  
Exposed Vent can be Primed and Painted to Blend into its Surroundings  
Sold As: Single



FORZA 10

Type: 10" Outdoor Subwoofer  
Woofer: 10" Polypropylene Cone with Rubber Surround  
Frequency Response: 50Hz - 300Hz  
Power Handling: 300 Watts  
Sensitivity: 86 dB  
Impedance: 4 Ohms  
3FT Speaker Cable Included  
Sold As: Single  
Color: Antique Bronze



FORZA 8

Type: 8" Omni-directional Partial In-Ground Subwoofer  
Woofer: 10" Polypropylene  
Frequency Response: 50Hz - 250Hz (crossover at 250Hz)  
Power Handling: 250 Watts  
Sensitivity: 1w/1m 88dB +/- 3  
Impedance: 8 Ohms  
Radiates immersive bass in a 360° direction  
UV-resistant ABS, impact-resistant enclosure  
Sold As: Single  
Color: Antique Bronze



OMSUB200

Type: 8" In-Ground Passive Subwoofer  
Woofer: 8" Polypropylene Cone with Rubber Surround  
Frequency Response: 50Hz - 250Hz  
Power Handling: 250 Watts  
Sensitivity: 1w/1m 88 dB +/- 3  
Impedance: 4 Ohms  
360° Omni-directional  
Weatherproof Impact Resistant Cabinetry  
Sold As: Single  
Color: Green



BOM 4.1.2

Type: Outdoor Bluetooth® Powered Subwoofer w/ Stereo Outputs  
Woofer: 8" Polypropylene Cone with Butyl Rubber Surround  
Frequency Response: 50Hz to 20kHz  
Power Handling: 100W  
Impedance: 8 Ohms  
Stereo Output: Class D 60W x 2 Pair  
Bluetooth® Range: 30-75 Feet Line of Sight  
Bluetooth® Version: 4.0  
Compatible with A2DP Standard  
Features Dual Stereo Output Connections (Speakers Sold Separately)  
What's Included: IP67 Waterproof Power Adapter and Waterproof Wire Connectors  
Sold As: Single  
Color: Antique Bronze



BOM 4.1

Speaker type: 8" Bluetooth® outdoor omni subwoofer with stereo outputs  
Bluetooth® version: 4.0  
Frequency Range: 30Hz to 5kHz  
Power Handling: 100W  
Impedance: 4ohms  
Bluetooth® range: 30-75 feet line of sight  
Water Proof IP67 Rated Power Supply  
Compatible with A2DP standard  
Silicone-sealed internal cabinetry & driver  
Sold As: Single  
Color: Green



## ELECTRONICS



# 2-CH AMPLIFIERS



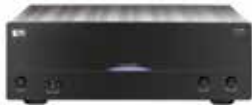
XMP500 DSP

Amplifier Type: Stereo Digital Class D  
Channels: 2; Speaker A, B or A&B Output  
Power: 125W(RMS)/ 250W(MAX) @ 8 Ohm  
Power: 175W(RMS)/ 350W(MAX) @ 4 Ohm  
Bridged Rating (Watts): 700W @ 8 Ohm  
Frequency Response: 10Hz-30kHz, -2dB/ +1dB  
Impedance: 8 Ohm and 4 Ohm Stable  
Channel Separation: 65dB @ 1kHz  
Signal to Noise Ratio: 100 dB  
Output into 8 Ohms w/ 20kHz  
12V Trigger Mode  
Inputs: Dual Source w/ Priority Switching  
Output: Main Line Pass Thru  
Rack Mountable: Yes, Mounts Included  
Remote Control: Yes



XMP300

Design Type: Stereo Class D  
Peak Power Output: 150 Watts RMS  
150W Maximum 8 ohm stereo output power  
225W Maximum 4 ohm stereo output power  
450W Maximum 8 ohm Bridged-Mono  
Frequency Response: 10Hz ~ 30kHz  
Impedance: 8 ohm to 4 ohm stable  
Signal to Noise Ratio: 100dB below 150W  
output into 8 ohms w/20kHz  
Auto On: Signal sensing, Trigger  
Automatic Priority Dual Source Switching  
DSP (Digital Signal Processing)  
Input and Output Terminals  
Rack Mount: Rack mount ears included



AMP300

Design Type: Class A/B  
Peak Power Output: 350 Watts per channel  
150W maximum 8 ohm stereo output power  
235W Maximum 4 ohm stereo output power  
470W Maximum 8 ohm Bridged-Mono output  
Frequency Response: (20Hz to 20kHz)  
Impedance: 8 ohm to 2 ohm stable  
Signal to Noise Ratio: -103dB  
Turn on options: manual, signal, and 12V Trigger  
Automatic Dual Source Priority Switching  
Automatic source switching  
High Output Toroidal Power Supply  
Input and Output Terminals  
Rack Mountable  
Dual Source Switching



AMP200

Design Type: Class A/B  
Peak Power Output: 200 Watts per channel  
80W Maximum 8 ohm stereo  
125W Maximum 4 ohm stereo  
250W Maximum 8 ohm Bridged-Mono  
Frequency Response: (20Hz to 20kHz)  
Impedance: 8 ohm to 2 ohm stable  
Signal to Noise Ratio: -103dB  
Auto On: Signal, and 12V Trigger  
Automatic Dual Source Priority Switching  
Input and Output Terminals  
Rack Mountable  
Dual Source Switching



XMP100

Design Type: Class D  
Peak Power Output: 75W RMS per Channel  
and Bridgeable Outputs for 160W RMS  
50W Maximum 8 ohm stereo  
75W Maximum 4 ohm stereo  
160W Maximum 8 ohm Bridged-Mono  
Frequency Response: 10Hz ~ 30kHz  
Impedance: 8 ohm to 4 ohm stable  
Signal to Noise Ratio: 100dB below 50w out-  
put into 8 ohms w20kHz Lowpass filter  
Signal Sensing: Power On and Trigger Mode  
Automatic source switching  
Input and Output Terminals



XMP60

Design Type: 2 Channel Stereo  
Class: Digital Class D  
Power: 25W(RMS)/ 50W(MAX) @ 8 Ohm  
Power: 45W(RMS)/ 90W(MAX) @ 4 Ohm  
Bridged Rating (Watts): 90W @ 8 Ohm  
Frequency Response: 20Hz-20kHz, -2dB/ +1dB  
Impedance: 8 Ohm and 4 Ohm Stable  
Signal to Noise Ratio: 90 dB  
12V Trigger Mode  
Inputs: Two stereo audio inputs, 2 RCA inputs,  
3.5mm jack  
Output: Main Line Pass Thru  
Rack Mountable



NERO WRSKII

Type: 2 Ch Amplifier & Wireless Subwoofer Kit  
Peak Power Output: 25 Watts per channel  
Power: 25W (load at 4ohm)  
Subwoofer Out: 2V  
Frequency Response: Subwoofer: 20Hz - 200Hz  
Speaker: 20Hz - 20kHz  
2.4GHz for Crystal Clear Audio  
Signal to Noise Ratio: >80dB  
Up to 100 FT operation (line of sight)  
What's included: transmitter, receiver, 9V AC  
adapter, 15V AC adapter, strands (2), 6 FT speak-  
er wire, & user guide

## POWER TO THE SPEAKER

Today's A/V receivers are loaded with bells and whistles, but if you want to add muscle to your home theater or whole-house audio system, add a home audio stereo amplifier. In addition to providing power to passive speakers, an amplifier smooths out the electrical current and eliminates irregularities that can cause distortion and unwanted noise. Amplifiers come in different classes, but the most common are Class A/B and Class D. Both have their advantages, but Class D, or digital amps, are becoming more popular due to their high efficiency. Choosing the right amp depends on the type of system you're designing. Stereo audio amplifiers are ideal for powering two-channel listening rooms or for boosting the sound of smaller sound systems and gaming rooms.

## KEY FEATURES



### DSP

- DSP ( Digital Sound Processor) let's you custom tailor your listening experience



### High Output

- Class D Power
- 2 Ohm stable (select models)
- Bridged Mono Output



### Compact

- Our Class D digital amps offer a small 1U chassis or smaller and produce less heat than traditional amplifiers



# STREAMING AMPLIFIERS



NERO  
STREAM XD

Type: 2 Ch. Digital Class D Amplifier  
App Control: Multi Source, Multi Zone  
Peak Power Output: 200W  
8 Ohm Rating (Watts): 30W Per Channel  
4 Ohm Rating (Watts): 60W Per Channel  
Frequency Response: 20Hz-20kHz  
Impedance: 8 Ohm to 4 Ohm Stable  
Inputs: Bluetooth/ Optical/ RCA Aux/ Wi-Fi/ USB  
Output: Dedicated Subwoofer, Mono/RCA  
Max Sample Rate: 44.1kHz, 48kHz, 96kHz, 192kHz  
Bit Resolution: 16-24 bits  
DAC: Cirrus Logic CS8416, Supports 24Bit/192kHz  
Bluetooth' Range: 33'  
Wall Mountable  
Remote Control



NERO  
STREAM WRA

Wireless Streaming Outdoor Amplifier  
Weather Resistant  
App Control: Multi Source, Multi Zone  
8 ohm: 25W x 4 Peak  
4 ohm: 50W x 4 Peak  
Bass Adjustment: +/-12dB @ 100Hz/0dB  
Treble Adjustment: +/-12dB @ 10KHz/0dB  
Signal to Noise Ratio: 90dB  
Ingress Protection Rating: IP64

## IT'S JUST SO EASY

Unleash the audiophile inside you with one of our unique integrated amplifiers with digital wired and wireless options that bridge the gap between high fidelity sound and wireless streaming in a compact, stand-alone and easy to use network. With a built-in 16 to 24 bit digital-to-analog converter (DAC) and inputs to cover all entertainment sources, NERO-STREAM-XD gives you unlimited access to all your digital audio sources, such as Spotify, iHeartRadio, TuneIn with smart speakers, and jump drives, and allows you to play those sources through new or existing audio components and speakers.

## KEY FEATURES



### OSD Player

- Free control app for NERO STREAM & LINK
- Multi unit control
- Control Volume, Source, Zone, & more



### Multi-Room

- Easily create a multi-room system with multiple units
- App Control
- Multi source



### Compact

- High power digital output
- Easily mount or conceal out of site



NERO VOX

Flush Mount In-Wall Amplifier for Amazon Echo Dot 3, Wi-Fi, Bluetooth & Voice Activation  
AC Input: Multi-Voltage 100-240VAC  
DC Input: 18V/2A  
Signal Voltage: 500mV  
Power Output: 20 Watts RMS, 40W peak  
DC Output 12V/2A  
4 Ohm Stable  
Multi-Room Capable  
3.5mm Aux Input (TV, Smartphone)  
Includes 4.5FT Cat5 2-way Audio Cable  
Includes 4.5FT Power Connecting Cable  
Paintable Snap-On Square Trim Cover  
Echo Dot 3 not included



NERO LINK

WiFi Streaming Receiver Music Server  
Maximum Sample Rate: 48kHz  
Bit Resolution: 16 bits  
Stream from your favorite service like Spotify, In-tune Radio, i-Heart Radio, and more!  
Control the music from your phone or tablet  
Simple to use with the OSD Audio's free Player app

# MULTI-CH AMPLIFIERS



NERO MAX12

Type: Multi Channel Class D  
6x6 Audio Matrix with 6 bridgeable zones  
Power: 25W @8Ω, 60W @4Ω, 100W Bridged  
Whole House Audio Control System  
Expandable up to 3 units  
iOS & Android Control App  
High Efficiency Class D Amplifier  
Stereo/Bridge mono output  
IR Remote  
RS-232 port  
PA Input Jack  
6 IR Emitter 3.5mm Mono Mini Phone Jacks  
3 Zone Pre-Amp Outputs



NERO MAX12  
KEYPADS

Includes 6 Keypads  
Single Gang  
Compatible with NERO MAX12 Amplifier  
Numeric LED Display  
Built-In IR Receiver  
Source Select  
Control: Volume, Bass and Treble



MX1680

Type: Multi Channel Class D  
Channels: 16 Each; 8 Stereo Zones  
Power: 50W(RMS)/ 100W(MAX) Per Ch @ 8 Ohm  
Power: 80W(RMS)/ 160W(MAX) Per Ch @ 4 Ohm  
Bridged Rating (Watts): 320W(MAX) @ 8 Ohm  
Impedance: 8 Ohm and 4 Ohm Stable  
Frequency Response: 20Hz to 20KHz  
Signal to Noise Ratio: 90 dB A-weighted  
12V Trigger Mode, Bus  
Zone Line Input: Line In, Bus In 1, Bus In 2 Per Zone  
Individual Output Level Controls for Each Channel  
Speaker Connectors: Detachable Speaker Terminals, up to 14AWG



MX1280

Type: Multi Channel Class D  
Channels: 12 Each; 6 Stereo Zones  
Power: 50W(RMS)/ 100W(MAX) Per Ch @ 8 Ohm  
Power: 80W(RMS)/ 160W(MAX) Per Ch @ 4 Ohm  
Bridged Rating (Watts): 320W(MAX) @ 8 Ohm  
Impedance: 8 Ohm and 4 Ohm Stable  
Frequency Response: 20Hz to 20KHz  
Signal to Noise Ratio: 90 dB A-weighted  
12V Trigger Mode, Bus  
Zone Line Input: Line In, Bus In 1, Bus In 2 Per Zone  
Individual Output Level Controls for Each Channel  
Speaker Connectors: Detachable Speaker Terminals, up to 14AWG



MX1260

Type: Class A/B  
12 Independent Channels /6 stereo zones  
Peak Power Output: 60 Watts per channel  
40W Maximum 8 ohm stereo output power  
60W Maximum 4 ohm stereo output power  
80W Maximum 8 ohm Bridged-Mono output power  
Frequency Response: 5Hz to 72kHz  
Impedance: 8 ohm to 4 ohm stable  
Signal to Noise Ratio: 95dB A-weighted  
Turn on options: manual, signal sensing, trigger  
Unique bus system distributes a signal from 1 source to multiple locations  
Input and Output Terminals: Bus 1 & 2 inputs/outputs, individual zone line inputs, speaker terminals  
Rack Mountable, rack mount ears included  
Dual Source Switching



MX880

Type: Multi Channel Class D  
Channels: 8 Each; 4 Stereo Zones  
Power: 50W(RMS)/ 100W(MAX) Per Ch @ 8 Ohm  
Power: 80W(RMS)/ 160W(MAX) Per Ch @ 4 Ohm  
Bridged Rating (Watts): 320W(MAX) @ 8 Ohm  
Impedance: 8 Ohm and 4 Ohm Stable  
Frequency Response: 20Hz to 20KHz  
Signal to Noise Ratio: 90 dB A-weighted  
12V Trigger Mode, Bus  
Zone Line Input: Line In, Bus In 1, Bus In 2 Per Zone  
Individual Output Level Controls for Each Channel  
Speaker Connectors: Detachable Speaker Terminals, up to 14AWG



PRE1

Type: 7 Zone Speaker  
Selector w/ IR Remote Control  
7 Zones or Speaker Pairs  
Single Source  
Impedance Protection: No  
Maximum Operating Range: 400W  
Input Source: 7 Inputs to Speaker A/B or 2 Sources to 7 Zones  
Input/ Output Connector Type: Multi-way Binding Posts  
Last Call Back-up Memory Function  
Rack Mountable  
Remote Control

## POWER FOR THE WHOLE HOUSE

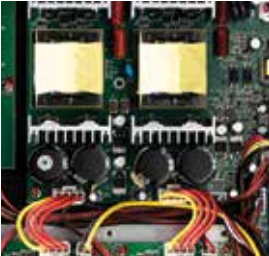
Ideal for whole house audio and home theater systems, these versatile amps typically start at five channels and can go as high as 16 channels. Power output varies but decreases as channels increase. For example, a 5-channel multi-zone amplifier is a great choice for 5.1 surround sound systems because it delivers power to left, right, center, and rear surrounds, so you'll experience action thrillers with sound quality that rivals commercial movie theaters. A 16-channel multi-channel audio amplifier is a popular choice for whole house audio systems and can control up to eight zones or 16 speakers for superior sound playing room to room.

## KEY FEATURES



### OSD Control

- NERO MAX12 has a built in control app and can be expanded up to 3 units to build the ultimate entertainment system



### Power

- Class D Power
- 4 Ohm load capable
- Stereo or Bridged



### Options

- Our MX1680 offers 16 channels for up to 8 zones of wholehouse audio entertainment
- The NERO MAX12 has the option to add a keypad kit for a fully enhanced experience



SUBWOOFER AMPS



SMP1000 DSP

Type: Subwoofer Amplifier  
Class: Digital Class D, 93% Efficient  
Channels: 1  
Power: 300W(RMS)/ 600W(MAX) @ 8 Ohm  
Power: 400W(RMS)/ 1000W(MAX) @ 4 Ohm  
Adjustable Low Pass Crossover: 35Hz-180Hz  
Impedance: 8 Ohm and 4 Ohm Stable  
Signal to Noise Ratio: 95 dB  
12V Trigger Mode  
Inputs: High Level / Low Level RCA  
Outputs: High Level / Low Level RCA  
Variable Crossover: 40Hz-160Hz  
Selectable Phase Points: 0 to 315°  
Mode Select: Sub / LFE (Bypass LPF)  
Automatic Source Switching  
DSP (Digital Signal Processing): with memory  
Rack Mountable  
Remote Control



SMP500 DSP

Type: Subwoofer Amplifier  
Class: Digital Class D, 93% Efficient  
Channels: 1  
Power: 400W(RMS)/ 800W(MAX) @ 4 Ohm  
Adjustable Low Pass Crossover: 30Hz-150Hz  
Impedance: 8 Ohm and 4 Ohm Stable  
Signal to Noise Ratio: 95 dB  
12V Trigger Mode  
Inputs: High Level / Low Level RCA  
Outputs: High Level / Low Level RCA  
Variable Crossover: 40Hz-160Hz  
Selectable Phase Points: 0 to 315°  
Mode Select: Sub / LFE (Bypass LPF)  
Automatic Source Switching  
DSP (Digital Signal Processing): with memory  
Rack Mountable  
Remote Control



SMP300

Type: Subwoofer Amplifier  
Amplifier Class: Digital Class D  
Channels: 1  
Power: 150W RMS @ 8 ohm w/ 300W Peak  
Power: 250W RMS @ 4 ohm w/ 500W Peak  
Frequency Response: 20Hz-160Hz  
Variable Crossover: 35Hz-180Hz  
Variable Phase Switch: 0 to 180 Degrees  
Impedance: 8 Ohm and 4 Ohm Stable  
Signal to Noise Ratio: 95 dB  
12V Trigger Mode  
Inputs: High Level / Low Level RCA  
Rack Mountable



SMP200

Type: Subwoofer Amplifier  
Amplifier Class: Digital Class D  
Channels: 1  
Power: 120W RMS @ 8 ohm w/ 240W Peak  
Power: 200W RMS @ 4 ohm w/ 400W Peak  
Frequency Response: 20Hz-160Hz  
Variable Crossover: 35Hz-160Hz  
Variable Phase Switch: 0 to 180 Degrees  
Impedance: 8 Ohm and 4 Ohm Stable  
Signal to Noise Ratio: 95dB  
12V Trigger Mode  
Inputs: High Level / Low Level RCA  
Rack Mountable

MORE BASS IN YOUR SPACE

While many A/V receivers include connections to power a passive subwoofer, these speakers are power-hungry beasts that will perform at their best when connected to a dedicated amplifier. Not only does a subwoofer amp add the necessary power, but it also routes low-frequency effects away from your surround speakers so you can enjoy the full gamut of sound when watching movies and listening to music. Like conventional amplifiers, You can choose from a compact 80W amp to power a single 8” subwoofer, all the way up to a 500W amp to bring better, louder, and clearer bass to any space.

KEY FEATURES



DSP Control

- DSP ( Digital Sound Processor) let's you custom tailor your listening experience



High Power

- Class D Digital Power
- 4 Ohm load capable
- Optimum Subwoofer Performance



Compact

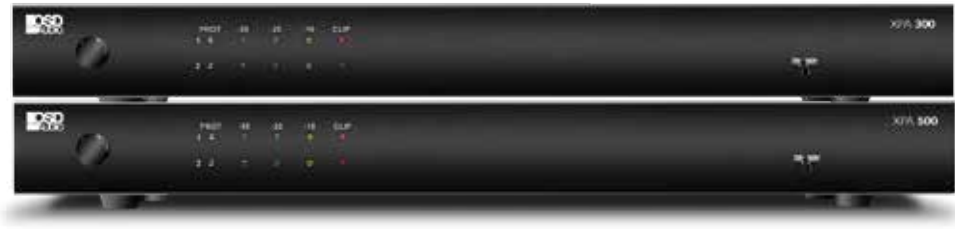
- Our Class D digital amps offer a small 1U chassis or smaller, more efficient and produce less heat than traditional amplifiers



SMP100

Design Type: Class D  
Power Output: 80W RMS @ 8 ohm w/ 160W Peak  
Power Output: 100W RMS @ 4 ohm w/ 200W Peak  
Frequency Response: 20Hz ~ 160Hz  
Impedance: 8 ohm to 4 ohm stable  
Input Sensitivity: 200mV  
Crossover: 40-160Hz  
Phase: 0-180°  
Signal to Noise Ratio: 95dB  
Signal Sensing: Power On/ Trigger Mode  
Automatic source switching  
Input and Output Terminals: RCA input, speaker level in/out, trigger, sub out

COMMERCIAL AMPS



XPA500

Type: 70/100V Commercial Amplifier  
Power Output: 500 Watts Per Channel  
Amp Design: Class D 93% Efficient  
Inputs: Balance and Unbalanced Inputs  
Outputs: Unbalanced Loop Line Output to Another Amplifier  
12V Trigger  
70V/100V: Selectable Rear Panel Switch  
IR Remote: Hard Wired IR Receiver/ Codes Available  
RS232 Queries & Commands Available  
Output Level Meter  
Multi-Voltage: AC115/230V



XPA300

Type: 70/100V Commercial Amplifier  
Power Output: 300 Watts Per Channel  
Amp Design: Class D 93% Efficient  
Inputs: Balance and Unbalanced Inputs  
Outputs: Unbalanced Loop Line Output to Another Amplifier  
12V Trigger  
70V/100V: Selectable Rear Panel Switch  
IR Remote: Hard Wired IR Receiver/ Codes Available  
RS232 Queries & Commands Available  
Output Level Meter  
Multi-Voltage: AC115/230V



PAM245

Amplifier Type: 70V/8-4 Ohm Commercial Mixer/  
Integrated Power Amplifier  
Amplifier Class: Digital Class D  
Channels: 5 Zones; 70V with Independent On/Off Switch per Zone  
Power: 120W(RMS)/ 240W(MAX) @ 8 Ohm  
Power: 240W(RMS)/ 480W(MAX) @ 4 Ohm  
Power: 70V Rating (Watts): 220W  
Frequency Response: 55Hz-15kHz, (+0dB, -3.0dB)  
Impedance: 8 Ohm and 4 Ohm Stable  
Music On Hold and Telephone Interrupt Back Panel Connections w/ Variable Level Controls  
5 Zone 70V Output Connections (Comm/70V); Plus 4 and 8 Ohm Mono Output Connections  
Front Panel Variable Knobs: Mic 1, 2, 3; Aux 1, 2, 3; Bass & Treble, and Master Volume  
5 Zone Selector On/Off Buttons  
Digital Volume Level Display  
Inputs: 6 Standard / Mixed + Non-zoned 4/8 Ohm Output  
Dual RCA or Single Channel XLR Balanced Line Outputs  
Rack Mountable  
Remote Control: IR Remote, RS232 Connection



PA150

Type: 100V/70V/8 Ohm Commercial Mixer/  
Integrated Power Amplifier  
Amplifier Class: Class A/B  
Channels: 1  
Power: 60W(RMS)/ 120W(MAX) @ 8 Ohm  
Power: 60W(RMS)/ 120W(MAX) @ 70V  
Power: 60W(RMS)/ 120W(MAX) @ 100V  
Frequency Response: 55Hz to 15kHz  
Power Bandwidth: 55Hz-15kHz  
Signal to Noise Ratio: MIC: >55 dB, LINE: >60 dB, AUX: >70 dB, TEL: >70dB  
Inputs: 3 Mic, 3 AUX, Tel/Page (Mixed)  
PTT Push To Talk, 24VDC, and Telephone Interrupt Back Panel Connections  
Front Panel Variable Knobs: Mic 1, 2, 3; Aux 1, 2, 3; Bass & Treble, and Master Volume  
Chime and Alarm Front Panel Push Buttons  
Rack Mountable



PA90

Type: 100V/70V/8 Ohm Commercial Mixer/ Integrated  
Power Amplifier  
Amplifier Class: Class A/B  
Channels: 1  
Power: 30W(RMS)/ 60W(MAX) @ 8 Ohm  
Power: 30W(RMS)/ 60W(MAX) @ 70V  
Power: 30W(RMS)/ 60W(MAX) @ 100V  
Frequency Response: 55Hz-15kHz  
Power bandwidth: 55Hz to 15kHz  
Signal to Noise Ratio: MIC: >55 dB, LINE: >60 dB, AUX: >70 dB, TEL: >70 dB  
Inputs: 3 Mic, 3 AUX, Tel/Page (Mixed)  
PTT Push To Talk, 24VDC, and Telephone Interrupt Back Panel Connections  
Front Panel Variable Knobs: Mic 1, 2, 3; Aux 1, 2, 3; Bass & Treble, and Master Volume  
Chime and Alarm Front Panel Push Buttons  
Rack Mountable

PROFESSIONAL POWER

70V amplifiers are used primarily for background audio in restaurants, schools, or retail buildings. A good commercial audio setup needs a high current 70v amp with flexible input and output connections that accommodate a variety of audio sources, including paging capability. Commercial audio systems often require dozens or more speakers with lengthy cable runs that would overload conventional power amplifiers. While a 70V commercial amp functions like a conventional amplifier, it includes transformers that can step up or step down the voltage so you can run multiple speakers on one amp with a daisy chain wiring configuration. OSD Audio 70v amplifiers come in different power ratings for small, medium, and large installations so you can select the right amp for the job.

KEY FEATURES



Control

- Multi-Zone capable
- Remote Control
- Multi-Voltage 115/230V



Reliability

- Class D Digital Power
- 4 Ohm load capable
- RS232 Compatible



Options

- 70v, 100v & 8 ohm compatible
- Multiple mic & line level inputs with independent gain control
- Rack-mountable with integrated chime & paging features



SPEAKER SELECTORS



8-Zone Speaker Selector  
On/Off Zone Control  
Impedance Protection Circuit

ISS8



6-Zone Speaker Selector  
On/Off Zone Control  
Impedance Protection Circuit

ISS6



4-Zone Speaker Selector  
On/Off Zone Control  
Impedance Protection Circuit

ISS4



Modified Single Source Speaker Selector  
Connects 6 pairs of speakers  
Solid state circuit breakers  
Built-in overload protection  
Impedance protection  
Dual Source  
Individual speaker volume control  
Supports amplifiers up to 300W  
Freq Response: 20Hz-20kHz

SSVC6D



Four-zone output  
Dual Zone output  
Impedance matching volume control for each zone  
Dual source with independent a/b switch per zone  
Freq Response: 20Hz - 20kHz  
Removable connectors

SSVC4



Two-zone output  
Dual Zone output  
Impedance matching volume control for each zone output  
Dual source with independent a/b switch per zone  
Freq Response: 20Hz-20kHz  
Removable connectors

SSVC2



7-Zone Speaker Selector  
Dual Source Inputs  
Remote A/B Source Control  
Remote On/Off Zone Control

ATM7



70V Mono Single Channel  
2 Zones or 2 Speaker Pairs  
Single Source  
Power Handling: 100W Per Channel  
Frequency Response: 20Hz-22KHz  
Direct Pass Thru Allowing to Stack Additional SS2V70, Only Limited by Your Application  
Steps: 33 dB, 10 Steps Plus Full Off (Step 11)  
Removable Phoenix Connectors

SS2V70



In-Wall A/B Switch  
Power Handling: 100W

AB1.2



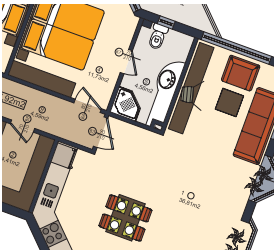
8-Zone In-Wall Distribution Panel  
Power Handling: 150W

SPW8

SOUND SELECTION

OSD Audio's comprehensive line of Speaker Selectors allows you to gain complete control over your multi-zone audio system. With features like independent speaker and volume adjustability, dual input a/b source control, and impedance protection circuitry, you can easily custom tailor the sound in your particular application. A new and unique development in OSD's Speaker Selector lineup is the ATM-7 remote controlled speaker selector. The ATM-7 now allows you to remotely manipulate your speaker selector without having to be at the source. In addition to our tabletop speaker selectors, we also have in-wall distribution panels & a/b switches to choose from. OSD Audio's speaker selector line is yet another example that for every problem, OSD has the perfect solution.

KEY FEATURES



Customized

- Distributes an amplified stereo audio signal into multiple zones
- Gain independent control of up to 12 pairs of speakers
- Includes impedance-protection circuitry



Options

- Add multiple pairs of speakers to your receiver or amplifier
- Listen to any combination of pairs simultaneously
- Solid-state circuit breakers protect from overload



Design

- Fits neatly into shelves or equipment racks
- Removable connecting blocks make wiring a breeze
- Easy installation with no additional power requirements  
chime & paging features

VOLUME CONTROLS



SLK300

Volume Control Type: Screwless Rotary Style  
Impedance Matching up to 8 Pr. of Speakers  
Power Handling: 300W Peak; 150W RMS  
Frequency Response: 20Hz - 20kHz  
Total Attenuation: 52 dB (Max)  
Steps: 12 (Make Before Break)  
"Quick Connect" Phoenix Connectors  
Single Gang Box Fitment  
What's Included: White, Ivory and Almond  
Plates, Inserts, Screws, and Slider  
Additional Colors: Bone, Black or Brown



SLK100

Volume Control Type: Screwless Rotary Style  
Impedance Matching up to 8 Pr. of Speakers  
Power Handling: 100W Peak; 50W RMS  
Frequency Response: 20Hz - 20kHz  
Total Attenuation: 52 dB (Max)  
Steps: 12 (Make Before Break)  
"Quick Connect" Phoenix Connectors  
Single Gang Box Fitment  
What's Included: White, Ivory and Almond  
Plates, Inserts, Screws, and Slider  
Additional Colors: Bone, Black or Brown



SLS300

Volume Control Type: Screwless Slider Style  
Impedance Matching up to 8 Pr. of Speakers  
Power Handling: 300W Peak; 150W RMS  
Frequency Response: 20Hz - 20kHz  
Total Attenuation: 52 dB (Max)  
Steps: 12 (Make Before Break)  
"Quick Connect" Phoenix Connectors  
Single Gang Box Fitment  
What's Included: White, Ivory and Almond  
Plates, Inserts, Screws, and Slider  
Additional Colors: Bone, Black or Brown



SLS100

Volume Control Type: Screwless Slider Style  
Impedance Matching up to 8 Pr. of Speakers  
Power Handling: 100W Peak; 50W RMS  
Frequency Response: 20Hz - 20kHz  
Total Attenuation: 52 dB (Max)  
Steps: 12 (Make Before Break)  
"Quick Connect" Phoenix Connectors  
Single Gang Box Fitment  
What's Included: White, Ivory and Almond  
Plates, Inserts, Screws, and Slider  
Additional Colors: Bone, Black or Brown



VMS300

In-Wall Slider Volume Control  
Impedance Matching  
Power Handling: 300W  
12-Step Slide Attenuation  
Removable Phoenix  
Connectors  
Single Gang Box Fitment  
Finishes: White, Ivory, Almond,  
Black, Brown



VMS100

In-Wall Slider Volume Control  
Impedance Matching  
Power Handling: 100W  
12-Step Slide Attenuation  
Removable Phoenix  
Connectors  
Single Gang Box Fitment  
Finishes: White, Ivory, Almond,  
Black, Brown



VMS60

In-Wall Slider Volume Control  
Impedance Matching  
Power Handling: 60W  
12-Step Slide Attenuation  
Removable Phoenix  
Connectors  
Single Gang Box Fitment  
Finishes: White, Ivory, Almond,  
Black, Brown



SVC405

In-Wall Volume Control with A/B Switch  
Impedance Matching  
Power Handling: 300W  
12-Step Attenuation  
Removable Phoenix  
Connectors  
Single Gang Box Fitment  
Finishes: White, Ivory,  
Almond



SVC205

In-Wall Volume Control with  
On/Off Switch  
Impedance Matching  
Power Handling: 300W  
12-Step Attenuation  
Removable Phoenix  
Connectors  
Single Gang Box Fitment  
Finishes: White, Ivory, Almond



SVC300

In-Wall Volume Control  
Impedance Matching  
Power Handling: 300W  
12-Step Attenuation  
Removable Phoenix  
Connectors  
Single Gang Box Fitment  
Finishes: White, Ivory, Almond,  
Black, Brown

TURN IT UP

Volume Controls are a must for any multi-zone music system and OSD Audio's line of indoor and outdoor volume controls makes it easy to find the perfect model for your application. OSD Audio's vast line of indoor volume controls includes in-wall impedance matching and resistor-based models which are available in both round knob and slider options. We even offer a table-top style indoor volume control, as well as an in-wall commercial 70v model. Our volume control line is made complete by a variety of outdoor offerings. Our outdoor volume controls are available in both impedance matching and resistor-based designs, with multiple power Handling settings to choose from. All OSD outdoor volume controls have a sealed, all-weather enclosure to protect them from the elements. With OSD Audio volume controls, you'll enjoy great sound throughout your home, indoors and outside, without having to run from room to room to turn the volume up or down.

KEY FEATURES



Indoor

- On/Off or A/B Switch Models
- Impedance matching & resistor-based models available
- Easy to install, single-gang mounting



Outdoor

- All-weather sealed enclosure
- Impedance matching & resistor-based models available
- Easily installs to conduit & wire runs



Commercial

- Mono 70v/100v compatible
- White & Ivory in-wall models
- Easy to install, single-gang mounting





In-Wall Volume Control  
Resistor-Based Design  
Power Handling: 150W  
11-Step Attenuation (Break Before Make)  
Removable Phoenix  
Connectors  
Single Gang Box Fitment  
Finishes: White, Ivory,  
Bone, Black, Brown

SVC100



In-Wall Volume Control  
Resistor-Based Design  
Power Handling: 150W  
11-Step Attenuation (Break Before Make)  
Removable Phoenix  
Connectors  
Single Gang Box Fitment  
Finishes: White, Bone, Almond

VKR120



In-Wall Volume Control  
Resistor-Based Design  
Power Handling: 150W  
11-Step Attenuation (Break Before Make)  
Removable Phoenix  
Connectors  
Single Gang Box Fitment  
Finishes: White, Bone, Almond

SKR120



Volume Control Type: 100W Rotary Style 70V  
Commercial Mono  
Power Handling: 100W  
Total Attenuation: 33 dB  
Steps: 10 (Make Before Break)  
Unique Thru Output Connection for Easy Daisy  
Chain Installs  
Wiring Requirement: Up to 14 Gauge Wire  
Fits in a Standard Single Gang Box  
What's Included: White, Ivory, and Almond  
Plates, Inserts, Screws, and Knob

MVC100



Volume Control Type: 100W Rotary Style 70V  
Commercial Mono  
Power Handling: 50W  
Total Attenuation: 33 dB  
Steps: 10 (Make Before Break)  
Unique Thru Output Connection for Easy Daisy  
Chain Installs  
Wiring Requirement: Up to 14 Gauge Wire  
Fits in a Standard Single Gang Box  
What's Included: White, Ivory, and Almond  
Plates, Inserts, Screws, and Knob

MVC50



Volume Control Type: 100W Rotary Style 70V  
Commercial Mono  
Power Handling: 25W  
Total Attenuation: 33 dB  
Steps: 10 (Make Before Break)  
Unique Thru Output Connection for Easy Daisy  
Chain Installs  
Wiring Requirement: Up to 14 Gauge Wire  
Fits in a Standard Single Gang Box  
What's Included: White, Ivory, and Almond  
Plates, Inserts, Screws, and Knob

MVC25



Two-zone output  
Dual Zone output  
Impedance matching volume control  
for each zone output  
Dual source with independent a/b  
switch per zone  
Freq Response: 20Hz-20kHz  
Removable connectors

OVC305R



Outdoor Volume Control  
Easy-Access Impedance Matching Switch  
Sealed, Waterproof  
Enclosure  
Power Handling: 300W  
12-Step Attenuation  
Labeled Terminal Leads  
Finishes: Gray & White

OVC300



Outdoor Volume Control  
Easy-Access Impedance Matching Switch  
Sealed, Waterproof  
Enclosure  
Power Handling: 100W  
12-Step Attenuation  
Labeled Terminal Leads  
Finishes: Gray & White

OVC100



Outdoor Volume Control  
Easy-Access Impedance Matching Switch  
Sealed, Waterproof  
Enclosure  
Power Handling: 50W  
12-Step Attenuation  
Labeled Terminal Leads  
Finishes: Gray

OVC50





## ACCESSORIES





# AURUM CABLE



## THE NEXT LEVEL

AURUM is the next level in A/V Cables brought to you by OSD Audio. Unique Custom Tooled Proprietary Connectors offer a great Family look complete with Matching Gold Cotton outer jacket. All cables feature 99.99% Pure Copper Conductors. Special attention was paid to the technical design of the cable to prevent unwanted noise including Twisted pair audio cables, double shielded and Source Grounded directional design. They look, feel and perform at a True Audiophile Level.

## KEY FEATURES



### Ultra High Speed

- Ultra High Definition 4K, ARC, 3D, High Speed HDMI, Ethernet, 18 Gigabits
- Proprietary Custom Tooled Connectors
- Unique Golden Cotton Outer Sleeve



### Pure Signal

- 99.99% Pure Copper Conductors
- Directional Audio Cables
- Audiophile Grade Components
- Each Category Offers Multiple Lengths



### HDMI

Aurum series ultra-high-speed hdmi audio/video cable with ethernet, Supports 4k, 3d and arc, cl3/ft4 rated 3.2ft - up to 65.6ft



### RCA

Aurum ultra high-performance, unbalanced rca stereo cable pair, 100% shielded low (signal) level for left/right output 6.5ft - 16.4ft



### SUBWOOFER CABLE

Aurum series ultra high-performance, unbalanced subwoofer cable, 100% shield low (signal) level rca male to rca male, single cable 3.2ft - 49.2ft



### SPEAKER CABLE

Aurum series audiophile-grade speaker cable, 14 gauge, 2-conductor stereo pair Interchangeable spade/banana connectors 6.5ft - 49.2ft



### XLR BALANCED

Aurum series ultra high-performance, premium balanced xlr cables for high-end audio/home theater systems pure copper connectors and heavy-duty shield - xlr male to xlr female 3.2ft - 32.8ft



### AC POWER

AURUM Series 14 Gauge Three Conductor AC Power Cables Audiophile Grade AC Power Cord Proprietary Custom Tooled Gold/Gun Metal Plated Connectors 99.99% Pure Copper Conductors, three bundles into one 15.0mm OD Heavy Duty Aluminum Foil Shield third Conductor Golden Cotton Sleeve; 15.0mm OD Available in 3.2ft - 16.4ft

# HDMI CABLE



## ULTRA HIGH DEF

Enjoy clear, crisp, immediate connectivity with the this High-Speed HDMI Cable. This quality High-Definition Multimedia Interface (HDMI) cable allows you to connect a wide variety of devices in the realms of home entertainment, computing, gaming, and more to your HDTV, projector, or monitor. Perfect for those that interact with multiple platforms and devices, you can rely on strong performance and playback delivery when it comes to your digital experience. Works with all HDMI® Enabled devices including Apple TV, Blu-ray players, AVRs, all gaming devices and Computers/Laptops connecting to HD LCD, LED, OLED Displays and 3D TVs. Fully compatible with PCs or Mac Computers. (UHD) Ultra High Definition 4K Resolution support at 60fps, 32 Audio Channel support, 21:9 True Cinema Aspect Ratio, supports dual video streaming and up to four audio streams at once.

## KEY FEATURES



### Premium HDMI

- Custom Tooled Gun Metal Barrel and Strain Relief Nut
- Supports both 32 Audio Channels and 21:9 Aspect Ratio
- ARC, HEC 3D, Deep Color, 340Mhz and 10.2Gps Plus



### Slim Locking HDMI

- High speed HDMI cable with Ethernet & ARC support
- Shielded & CL3 rated ultra-slim cable
- Premium metal & performance molded plastic housing available with tight-fit gold plated connectors



### Performance HDMI

- High speed HDMI cable with Ethernet support
- Shielded & CL3 rated for in-wall use
- Molded plastic housing with gold plated connectors



## PREMIUM

30 AWG featuring Black and Red Nylon jacket  
Unique Tight Fit 25=4Kt Gold Plated Connectors  
Active Digital Circuit Technology in Output Connector for longer lengths  
Custom Tooled Barrel and Strain Relief Nut  
100% Pure Copper Connectors  
High Speed HDMI Cable with Ethernet; latest version available  
Ultra 4K, 60 FPS (Frames per Second)  
480p, 720p, 1080p and 1280p (4K compatible)  
32 Audio Channels and 21:9 Aspect Ratio  
ARC, HEC 3D, 340Mhz and 10.2Gps Plus  
Length: From 6 - 65ft



## PREMIUM SLIM

Active Digital Circuit Technology in Output Connector  
24Kt Gold Plated Connectors  
Custom Tooled Low Profile Gun Metal Barrel  
High Speed HDMI Cable with Ethernet  
480p, 720p, 1080p and 1280p (4K compatible)  
Ultra High Definition 4K, 60FPS  
Supports both 32 Audio Channel and 21:9 Aspect Ratio  
ARC, HEC 3D, Deep Color, 340MHz and 10.2Gps  
CL3/FT4 rated outer jacket  
Approved for in-wall/in-ceiling installation  
Length: 20in & 9ft



## PERFORMANCE

24Kt Gold Plated Connectors  
Active Digital Circuit Technology in Output Connector for longer lengths  
High Speed HDMI Cable with Ethernet  
480p, 720p, 1080p and 1280p (4K compatible)  
Ultra High Definition 4K, 60FPS  
32 Audio Channel and 21:9 Aspect Ratio  
ARC, HEC 3D, 340MHz and 10.2Gps  
CL3/FT4 rated outer jacket  
Approved for in-wall/in-ceiling installation  
Length: From 3 - 150ft



## PERFORMANCE SLIM

Unique Tight Fit 24Kt Gold Plated Connectors  
Low Profile Barrel  
High Speed HDMI Cable with Ethernet  
480p, 720p, 1080p and 1280p (4K compatible)  
Ultra High Definition 4K, 60FPS  
32 Audio Channel and 21:9 Aspect Ratio  
ARC, HEC 3D, 340MHz and 10.2Gps  
CL3/FT4 rated outer jacket  
Approved for in-wall/in-ceiling installation  
Length: From 20in - 9ft



# SPEAKER CABLE



## GET CONNECTED

Rated for both in-wall and direct burial use, our high strand count copper cable provides excellent signal transfer for installations where ever music is needed, and the 14-gauge thickness is ideal for long wire runs (over 50 ft) and low-impedance speakers. The reinforced but flexible polypropylene jacket is UV resistant and protects the copper conductors from high heat and cold conditions as well as dirt, dust and other elements that can degrade cable integrity. Features that cater to demanding integrators include a reinforced box with an easy pull, snag-free design, and tissue-wrapped conductors for quick stripping. The extra sturdy box has a large payout hole, so cable runs are fast and smooth while the patented REELEX technology pulls coils from the inside out to prevent twists, knots, and tangles that can slow job progress. This sturdy audio speaker cable also includes two-foot increment printed markers so you can determine how much cable has been used and how much is left in the box, making long cable runs easier than ever.

## KEY FEATURES



### Have it all

- Large payout opening
- Water resistant Heavy Duty box
- Direct burial rated
- Oxygen free copper
- Ideal for long runs of wire



### REELEX Wind

- Patented REELEX technology for fast tangle free easy pulls
- Snag free slick jacket
- Tissue encased for easy stripping



### 2 or 4 Black/White

- 2 & 4 conductor models in black or white jacket
- Room ID and foot markers
- Rip cord for fast stripping



JA 12-2

12 gauge 2 conductor wire  
Weatherproof Design  
Double Insulated Cable  
Continuous working temp range: -4°F to 167°F  
Voltage rating: 300V Rams  
168 Strands of 99.9% oxygen-free copper  
Resistant to solvents, chemicals radiations  
Resistant to UV  
Direct Burial  
RoHS complied  
41 strands  
Length: 50ft, 100ft, 250ft or 500ft  
CL3R Rated, Residential & Commercial  
Available in White or Black



JA 14-2

14 gauge 2 conductor wire  
Weatherproof Design  
Double Insulated Cable  
Continuous working temp range: -4°F to 167°F  
Voltage rating: 300V rams  
41 Strands of 99.9% oxygen-free copper  
Resistant to solvents, chemicals radiations  
Resistant to UV  
Direct Burial  
RoHS complied  
Length: 50ft, 100ft, 250ft or 500ft  
CL3R Rated for Residential and Commercial  
Available in White or Black



JA 14-4

14 Gauge 4 Conductor Wire  
Weatherproof, Double Insulated Cable  
Continuous Working Temp Range: -4°F to 167°F  
Voltage Rating: 300V Rams  
105 Strands of 99.9% oxygen-free copper  
RoHS Compliant  
Flame Test: FT4  
Direct Burial & In-Wall Rated  
CL3R & FT4 Rated, Commercial & Residential  
Resistant to Solvents, Chemicals, Radiations,  
UV Resistant jacket  
ROHS Compliant  
UL Certified  
Available in White or Black



JA 16-2

16 Gauge 2 Conductor Wire  
Weatherproof, Double Insulated Cable  
Continuous Working Temp Range: -4°F to 167°F  
Voltage Rating: 300V Rams  
105 Strands of 99.9% Stranded oxygen-free copper  
RoHS Compliant  
Flame Test: FT4  
Direct Burial & In-Wall Rated  
CL3R & FT4 Rated, Commercial & Residential  
Resistant to Solvents, Chemicals, Radiations,  
UV Resistant jacket  
Available in White or Black



JA 16-4

16 Gauge 4 Conductor Wire  
Weatherproof, Double Insulated Cable  
Continuous Working Temp Range: -4°F to 167°F  
Voltage Rating: 300V Rams  
65 Strands of 99.9% oxygen-free copper  
RoHS Compliant  
Flame Test: FT4  
Direct Burial & In-Wall Rated  
CL3R & FT4 Rated, Commercial and Residential  
Resistant to Solvents, Chemicals, Radiations,  
UV Resistant jacket  
ROHS Compliant  
UL Certified  
Available in White or Black



FLAT WIRE

Flat 16 Gauge 2 Conductor Wire  
Weatherproof, Double Insulated Cable  
Continuous Working Temp Range: -4°F to 167°F  
Voltage Rating: 300V Rams  
25 Strands of 99.9% Pure Copper  
RoHS Compliant  
Direct Burial & In-Wall Rated  
CL3R & FT4 Rated, Commercial & Residential  
Resistant to Solvents, Chemicals, Radiations,  
Polyethylene Wire Jacket is UV Resistant  
Available: 6 - 500ft

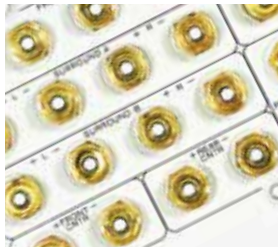
# WALL PLATES



## CABLE MANAGEMENT

Passing cables and wire through the wall can be a challenge to keep organized and clean. OSD Audio's Wall Plates were designed to solve that very problem. We offer both gold-plated binding post wall plates to organize speaker connections, as well as pass through bundle style plates to cleanly pass cables and wire through your wall. Both lines of wall plates come in single and double gang sizes and can be inserted into a multi-gang faceplate for a sleek, seamless look.

## KEY FEATURES



### Connector Plates

- Easily connect & pass speaker wire runs through your wall while maintaining a clean look
- Gold-plated binding posts accept bare wire or banana plugs for quick disconnect
- Single & double gang plates that accommodate multiple speakers connections



### Pass Through

- Easily pass cables & wires through your wall while maintaining a clean look
- Single & double gang sizes available
- Multiple color finishes



WP-16

16-Terminal 7.1 Home Theatre Wall Plate  
14 Gold-Plated Binding Posts w/ 2 Gold-Plated RCA connections  
Double Gang Fitment  
Finishes: White



WP-12

6-Speaker Binding Post Wall Plate  
12 Gold-Plated Binding Posts  
Double Gang Fitment  
Finishes: White



WP-8

4-Speaker Binding Post Wall Plate  
8 Gold-Plated Binding Posts  
Single Gang Fitment  
Finishes: White



WP-4

2-Speaker Binding Post Wall Plate  
4 Gold-Plated Binding Posts  
Single Gang Fitment  
Finishes: White



WP-2

Single Speaker Binding Post Wall Plate  
2 Gold-Plated Binding Posts  
Single Gang Fitment  
Finishes: White



PTW-01-2

Double Gang Pass Through Bundle Cable Wall Plate  
2" Pass Through Diameter  
Finishes: White



RPTW-SINGLE

Single Reversible Cable Entrance plate  
Protects low voltage cabling from damaging effects of being passed through a wall.  
Decorator style wall plate  
Reversible nose can be faced in or out



PTW-DOUBLE

Double Gang Pass Through Bundle Cable Wall Plate  
2" Pass Through Diameter  
Finishes: White



PTW-SINGLE

Single Gang Pass Through Bundle Cable Wall Plate  
1" Pass Through Diameter  
Finishes: White



INV-DOUBLE

Double Gang Inverted Pass Through Bundle Cable Wall Plate  
2" Pass Through Diameter  
Finishes: White



INV-SINGLE

Single Gang Inverted Pass Through Bundle Cable Wall Plate  
1" Pass Through Diameter  
Finishes: White



# INSTALL BRACKETS



## COME PREPARED

To accommodate all of your new construction speaker installation needs, we offer a variety of in-ceiling speaker brackets. Our speaker brackets are made up of a durable plastic ring that secures to the studs by way of two aluminum wings. The speaker brackets make the drywall framing process much easier even include a clip to hold your speaker wire. OSD Audio has you covered from start to finish.

## KEY FEATURES



### Professional

- New construction in-ceiling speaker brackets
- Fits a variety of OSD Audio models
- Makes new construction installation simple



### Work Faster

- Perfect for pre-wire
- Saves time
- Secure mounting



NCCB8

New Construction In-Ceiling  
Speaker Bracket  
Cutout Diameter: 9 1/2"



NCCB6

New Construction In-Ceiling  
Speaker Bracket  
Cutout Diameter: 7 3/4"



NCCB6-K

New Construction In-Ceiling  
Speaker Bracket  
Cutout Diameter: 8 1/4"



NCCB-70V

Ceiling Bracket  
Designed for the C1070 and the C1090VK  
Heavy gauge steel construction  
10.75" cut out







775 Columbia Street Brea, CA 92821

888.779.4968 | [osdaudio.com](http://osdaudio.com)